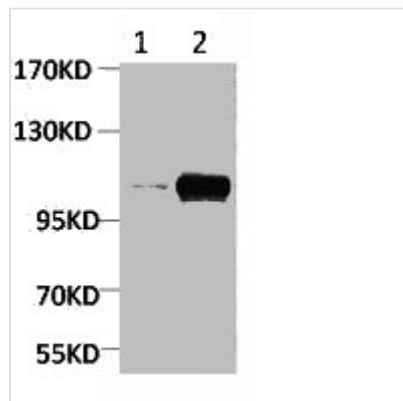




# Phospho-PGC (Ser15) Antibody

<b>Product Code</b>	CSB-PA080141
<b>Storage</b>	Upon receipt, store at -20°C or -80°C. Avoid repeated freeze.
<b>Uniprot No.</b>	P20142
<b>Immunogen</b>	Synthetic Peptide
<b>Raised In</b>	Rabbit
<b>Species Reactivity</b>	Plants
<b>Tested Applications</b>	WB;WB:1:1000-2000
<b>Form</b>	Liquid
<b>Conjugate</b>	Non-conjugated
<b>Storage Buffer</b>	PBS, pH 7.4, containing 0.5%BSA, 0.02% sodium azide as Preservative and 50% Glycerol.
<b>Isotype</b>	IgG
<b>Alias</b>	PGC; Gastricsin; Pepsinogen C
<b>Immunogen Species</b>	Homo sapiens (Human)
<b>Target Names</b>	PGC

## Image



Western blot analysis of Maize 1) Dark, 2) Light, diluted at 1:2000.

## Usage

For Research Use Only. Not for use in diagnostic or therapeutic procedures.