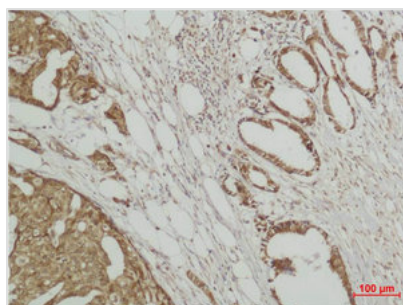




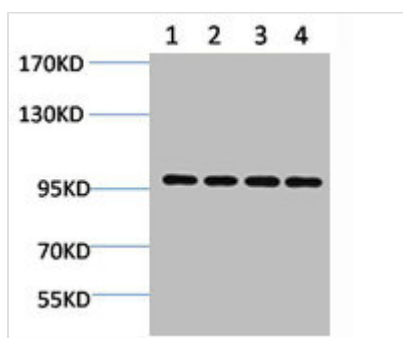
MAPK6 Antibody

| | |
|----------------------------|-------------------------------------------------------------------------|
| Product Code | CSB-PA080160 |
| Storage | Upon receipt, store at -20°C or -80°C. Avoid repeated freeze. |
| Uniprot No. | Q16659 |
| Immunogen | Recombinant Protein |
| Raised In | Rabbit |
| Species Reactivity | Human,Mouse,Rat |
| Tested Applications | WB; WB:1:500-1000, IHC:1:200-500 |
| Form | Liquid |
| Conjugate | Non-conjugated |
| Storage Buffer | Liquid in PBS containing 50% glycerol, 0.5% BSA and 0.02% sodium azide. |
| Isotype | IgG |
| Alias | Mitogen-activated protein kinase 6 |
| Immunogen Species | Homo sapiens (Human) |
| Target Names | MAPK6 |

Image



Immunohistochemical analysis of paraffin-embedded human Breast carcinoma using ERK 3 Polyclonal Antibody.



Western blot analysis of 1) HeLa, 2) 293T, 3) 3T3, 4) Rat Brain using ERK 3 Polyclonal Antibody.

Usage

For Research Use Only. Not for use in diagnostic or therapeutic procedures.