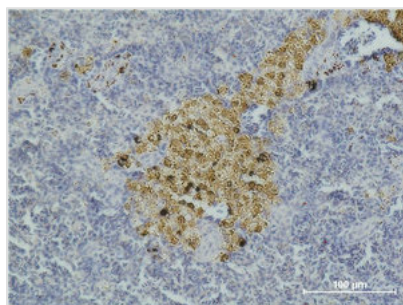




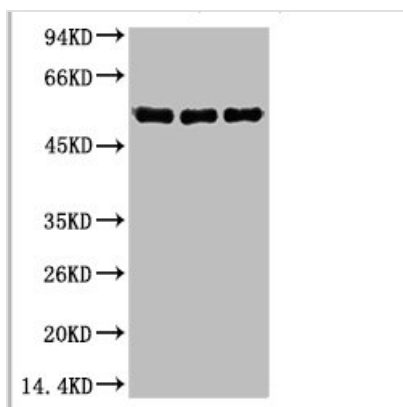
# CASP8 Monoclonal Antibody

|                            |   |
|----------------------------|---|
| <b>Product Code</b>        | CSB-MA080171  |
| <b>Storage</b>             | Upon receipt, store at -20°C or -80°C. Avoid repeated freeze.                         |
| <b>Uniprot No.</b>         | Q14790  |
| <b>Immunogen</b>           | Recombinant Protein   |
| <b>Raised In</b>           | Mouse   |
| <b>Species Reactivity</b>  | Human,Mouse,Rat   |
| <b>Tested Applications</b> | ELISA,WB,IHC;Recommended dilution:WB:1:500-1:5000,IHC:1:50-1:500                      |
| <b>Form</b>                | Liquid  |
| <b>Conjugate</b>           | Non-conjugated  |
| <b>Storage Buffer</b>      | PBS, pH 7.4, containing 0.5%BSA, 0.02% sodium azide as Preservative and 50% Glycerol. |
| <b>Isotype</b>             | IgG   |
| <b>Alias</b>               | Caspase-8   |
| <b>Product Type</b>        | Monoclonal Antibody   |
| <b>Immunogen Species</b>   | Homo sapiens (Human)  |
| <b>Target Names</b>        | CASP8   |
| <b>Clone No.</b>           | 23C9  |

## Image



Immunohistochemical analysis of paraffin-embedded Mouse Spleen Tissue using Caspase-8 Monoclonal Antibody.



Western blot analysis of 1) HeLa, 2) Mouse Brain Tissue, 3) Rat Brain Tissue using Caspase-8 Monoclonal Antibody.



---

**Usage**

For Research Use Only. Not for use in diagnostic or therapeutic procedures.