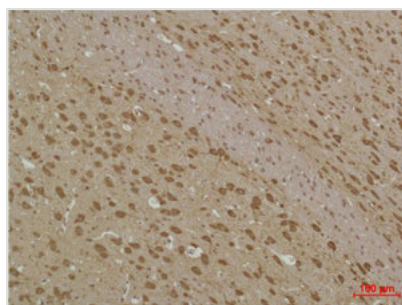




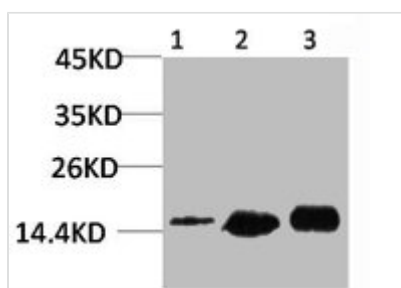
# MAP1LC3B Antibody

<b>Product Code</b>	CSB-PA080175
<b>Storage</b>	Upon receipt, store at -20°C or -80°C. Avoid repeated freeze.
<b>Uniprot No.</b>	Q9GZQ8
<b>Immunogen</b>	Recombinant Protein
<b>Raised In</b>	Rabbit
<b>Species Reactivity</b>	Human,Mouse,Rat
<b>Tested Applications</b>	WB, IHC; WB:1:1000-2000, IHC:1:200-500
<b>Form</b>	Liquid
<b>Conjugate</b>	Non-conjugated
<b>Storage Buffer</b>	PBS, pH 7.4, containing 0.02% sodium azide as Preservative and 50% Glycerol.
<b>Isotype</b>	IgG
<b>Alias</b>	Microtubule-associated proteins 1A/1B light chain 3B
<b>Immunogen Species</b>	Homo sapiens (Human)
<b>Target Names</b>	MAP1LC3B

## Image



Immunohistochemical analysis of paraffin-embedded Rat Brain Tissue using MAP LC3β Polyclonal Antibody.



Western blot analysis of 1) HeLa, 2) 3T3, 3) Rat Brain Tissue using MAP LC3β Polyclonal Antibody.