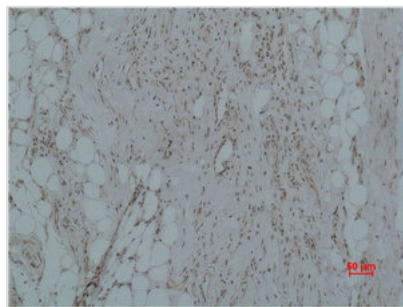




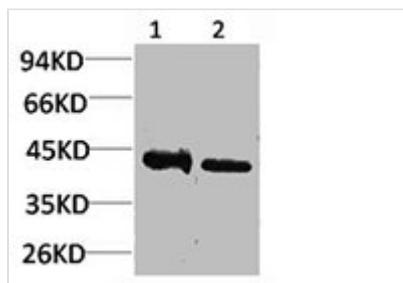
# CALHM1 Antibody

<b>Product Code</b>	CSB-PA080190
<b>Storage</b>	Upon receipt, store at -20°C or -80°C. Avoid repeated freeze.
<b>Uniprot No.</b>	Q8IU99
<b>Immunogen</b>	Synthetic Peptide
<b>Raised In</b>	Rabbit
<b>Species Reactivity</b>	Human,Rat
<b>Tested Applications</b>	WB, IHC; WB:1:500-1000, IHC:1:200-500
<b>Form</b>	Liquid
<b>Conjugate</b>	Non-conjugated
<b>Storage Buffer</b>	PBS, pH 7.4, containing 0.5%BSA, 0.02% sodium azide as Preservative and 50% Glycerol.
<b>Isotype</b>	IgG
<b>Alias</b>	Calcium homeostasis modulator protein 1
<b>Immunogen Species</b>	Homo sapiens (Human)
<b>Target Names</b>	CALHM1

## Image



Immunohistochemical analysis of paraffin-embedded Human Hepatocarcinoma using CALHM1 Polyclonal Antibody.



Western blot analysis of 1) Human Brain Tissue, 2) Rat Brain Tissue using CALHM1 Polyclonal Antibody.

## Usage

For Research Use Only. Not for use in diagnostic or therapeutic procedures.