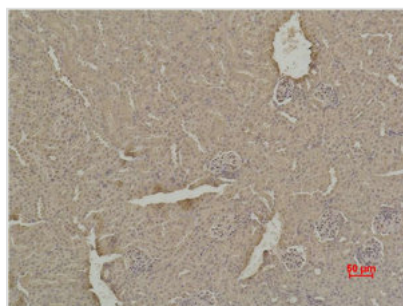




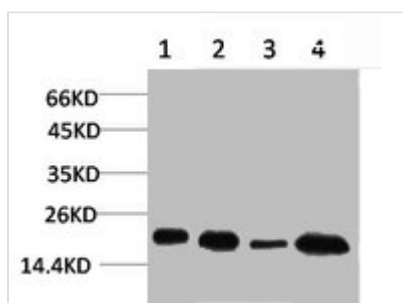
SOD1 Antibody

Product Code	CSB-PA080200
Storage	Upon receipt, store at -20°C or -80°C. Avoid repeated freeze.
Uniprot No.	P00441
Immunogen	Recombinant Protein
Raised In	Rabbit
Species Reactivity	Human,Mouse,Rat
Tested Applications	WB, IHC; WB:1:2000-5000, IHC:1:200-500
Form	Liquid
Conjugate	Non-conjugated
Storage Buffer	PBS, pH 7.4, containing 0.5%BSA, 0.02% sodium azide as Preservative and 50% Glycerol.
Isotype	IgG
Alias	Superoxide dismutase [Cu-Zn]
Immunogen Species	Homo sapiens (Human)
Target Names	SOD1

Image



Immunohistochemical analysis of paraffin-embedded Mouse Kidney Tissue using SOD1 Polyclonal Antibody.



Western blot analysis of 1) HeLa, 2) MCF7, 3) Mouse Brain Tissue, 4) Rat Brain Tissue using SOD1 Polyclonal Antibody.

Usage

For Research Use Only. Not for use in diagnostic or therapeutic procedures.