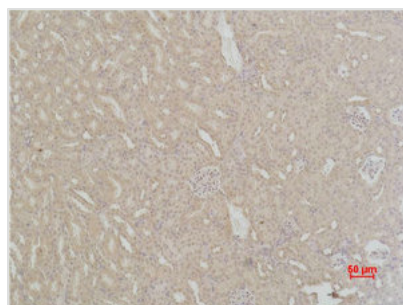




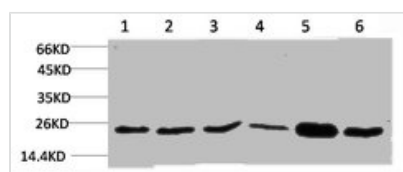
# SOD2 Antibody

<b>Product Code</b>	CSB-PA080201
<b>Storage</b>	Upon receipt, store at -20°C or -80°C. Avoid repeated freeze.
<b>Uniprot No.</b>	P04179
<b>Immunogen</b>	Recombinant Protein
<b>Raised In</b>	Rabbit
<b>Species Reactivity</b>	Human,Mouse,Rat
<b>Tested Applications</b>	WB, IHC; WB:1:1000-2000, IHC:1:200-500
<b>Form</b>	Liquid
<b>Conjugate</b>	Non-conjugated
<b>Storage Buffer</b>	Liquid in PBS containing 50% glycerol, 0.5% BSA and 0.02% sodium azide.
<b>Isotype</b>	IgG
<b>Alias</b>	Superoxide dismutase [Mn], mitochondrial
<b>Immunogen Species</b>	Homo sapiens (Human)
<b>Target Names</b>	SOD2

## Image



Immunohistochemical analysis of paraffin-embedded Mouse Kidney Tissue using SOD2 Polyclonal Antibody.



Western blot analysis of 1) 293T, 2) Hela, 3) C2C12, 4) 3T3, 5) Rat Liver Tissue, 6) Rat Brain Tissue using SOD2 Polyclonal Antibody.

## Usage

For Research Use Only. Not for use in diagnostic or therapeutic procedures.