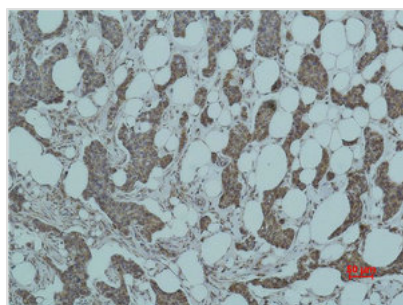




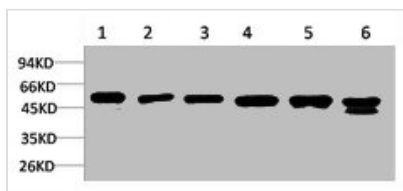
# SMAD3 Antibody

<b>Product Code</b>	CSB-PA080212
<b>Storage</b>	Upon receipt, store at -20°C or -80°C. Avoid repeated freeze.
<b>Uniprot No.</b>	P84022
<b>Immunogen</b>	Recombinant Protein
<b>Raised In</b>	Rabbit
<b>Species Reactivity</b>	Human,Mouse,Rat
<b>Tested Applications</b>	WB, IHC; WB:1:1000-2000, IHC:1:200-500
<b>Form</b>	Liquid
<b>Conjugate</b>	Non-conjugated
<b>Storage Buffer</b>	Liquid in PBS containing 50% glycerol, 0.5% BSA and 0.02% sodium azide.
<b>Isotype</b>	IgG
<b>Alias</b>	Mothers against decapentaplegic homolog 3
<b>Immunogen Species</b>	Homo sapiens (Human)
<b>Target Names</b>	SMAD3

## Image



Immunohistochemical analysis of paraffin-embedded human Breast carcinoma using Smad3 Polyclonal Antibody.



Western blot analysis of 1) A431, 2) Hela, 3) C2C12, 4) 3T3, 5) PC12, 6) Rat Brain Tissue using Smad3 Polyclonal Antibody.

## Usage

For Research Use Only. Not for use in diagnostic or therapeutic procedures.