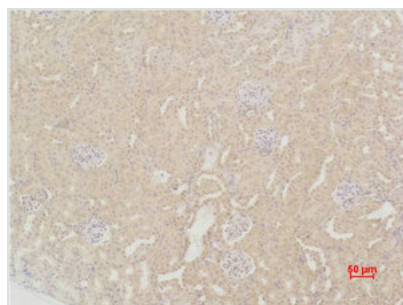




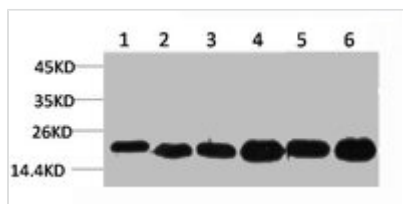
# SOD2 Antibody

<b>Product Code</b>	CSB-PA080216
<b>Storage</b>	Upon receipt, store at -20°C or -80°C. Avoid repeated freeze.
<b>Uniprot No.</b>	P04179
<b>Immunogen</b>	Recombinant Protein
<b>Raised In</b>	Rabbit
<b>Species Reactivity</b>	Human,Mouse,Rat
<b>Tested Applications</b>	WB, IHC; WB:1:1000-2000, IHC:1:200-500
<b>Form</b>	Liquid
<b>Conjugate</b>	Non-conjugated
<b>Storage Buffer</b>	PBS, pH 7.4, containing 0.02% sodium azide as Preservative and 50% Glycerol.
<b>Isotype</b>	IgG
<b>Alias</b>	Superoxide dismutase [Mn], mitochondrial
<b>Immunogen Species</b>	Homo sapiens (Human)
<b>Target Names</b>	SOD2

## Image



Immunohistochemical analysis of paraffin-embedded Mouse Kidney Tissue using SOD2 Polyclonal Antibody.



Western blot analysis of 1) Hela, 2) HepG2, 3) C2C12, 4) Mouse Liver Tissue, 5) Rat Brain Tissue, 6) Rat Liver Tissue using SOD2 Polyclonal Antibody.