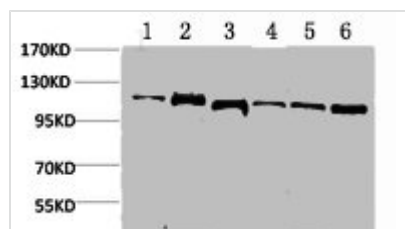




# STAT2 Antibody

|                            |   |
|----------------------------|---|
| <b>Product Code</b>        | CSB-PA080217  |
| <b>Storage</b>             | Upon receipt, store at -20°C or -80°C. Avoid repeated freeze.           |
| <b>Uniprot No.</b>         | P52630  |
| <b>Immunogen</b>           | Recombinant Protein   |
| <b>Raised In</b>           | Rabbit  |
| <b>Species Reactivity</b>  | Human,Mouse,Rat   |
| <b>Tested Applications</b> | WB, ELISA; WB:1:500-1:1000, ELISA:1:20000                               |
| <b>Form</b>                | Liquid  |
| <b>Conjugate</b>           | Non-conjugated  |
| <b>Storage Buffer</b>      | Liquid in PBS containing 50% glycerol, 0.5% BSA and 0.02% sodium azide. |
| <b>Isotype</b>             | IgG   |
| <b>Alias</b>               | Signal transducer and activator of transcription 2                      |
| <b>Immunogen Species</b>   | Homo sapiens (Human)  |
| <b>Target Names</b>        | STAT2   |

## Image



Western blot analysis of 1) Hela, 2) K562, 3) 3T3, 4) Mouse Heart Tissue, 5) Rat Heart Tissue, 6) Rat Kidney Tissue using Stat2 Polyclonal Antibody.

## Usage

For Research Use Only. Not for use in diagnostic or therapeutic procedures.