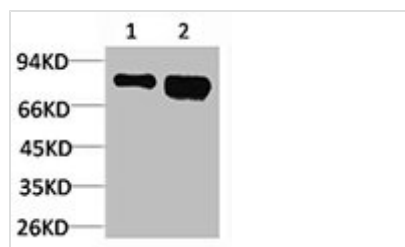




# RPS6KB1 Antibody

<b>Product Code</b>	CSB-PA080222
<b>Storage</b>	Upon receipt, store at -20°C or -80°C. Avoid repeated freeze.
<b>Uniprot No.</b>	P23443
<b>Immunogen</b>	Recombinant Protein
<b>Raised In</b>	Rabbit
<b>Species Reactivity</b>	Mouse,Rat
<b>Tested Applications</b>	WB,IHC;WB:1:1000-2000
<b>Form</b>	Liquid
<b>Conjugate</b>	Non-conjugated
<b>Storage Buffer</b>	Liquid in PBS containing 50% glycerol, 0.5% BSA and 0.02% sodium azide.
<b>Isotype</b>	IgG
<b>Alias</b>	Ribosomal protein S6 kinase beta-1
<b>Immunogen Species</b>	Homo sapiens (Human)
<b>Target Names</b>	RPS6KB1

## Image



Western blot analysis of 1) 3T3, 2) PC12 using p70 S6 kinase  $\alpha$  Polyclonal Antibody.

## Usage

For Research Use Only. Not for use in diagnostic or therapeutic procedures.