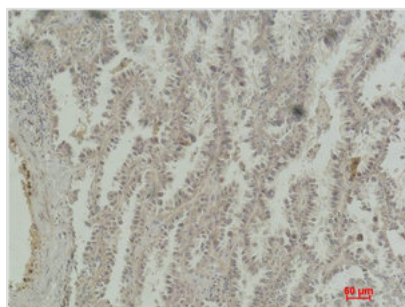




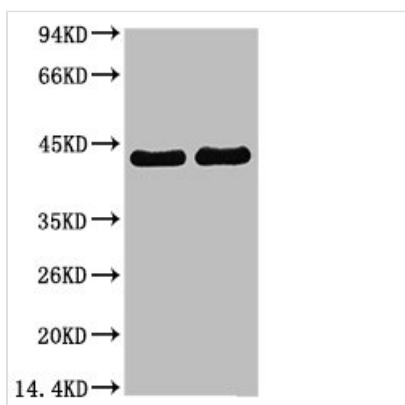
# CREB1 Monoclonal Antibody

<b>Product Code</b>	CSB-MA080223
<b>Storage</b>	Upon receipt, store at -20°C or -80°C. Avoid repeated freeze.
<b>Uniprot No.</b>	P16220
<b>Immunogen</b>	Recombinant Protein
<b>Raised In</b>	Mouse
<b>Species Reactivity</b>	Human,Mouse
<b>Tested Applications</b>	ELISA,WB,IHC;Recommended dilution:WB:1:500-1:5000,IHC:1:50-1:500
<b>Form</b>	Liquid
<b>Conjugate</b>	Non-conjugated
<b>Storage Buffer</b>	PBS, 50% glycerol, 0.05% Proclin 300, 0.05%BSA
<b>Isotype</b>	IgG
<b>Alias</b>	Cyclic AMP-responsive element-binding protein 1
<b>Product Type</b>	Monoclonal Antibody
<b>Immunogen Species</b>	Homo sapiens (Human)
<b>Target Names</b>	CREB1
<b>Clone No.</b>	15G10

## Image



Immunohistochemical analysis of paraffin-embedded Human Lung Carcinoma using CREB-1 Monoclonal Antibody.



Western blot analysis of 1) A431, 2) 3T3 using CREB-1 Monoclonal Antibody.



## Usage

For Research Use Only. Not for use in diagnostic or therapeutic procedures.