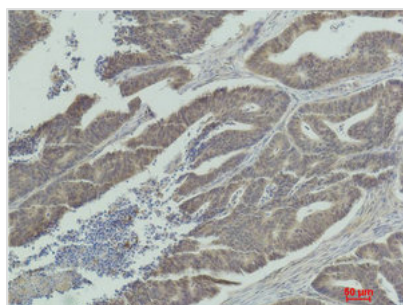




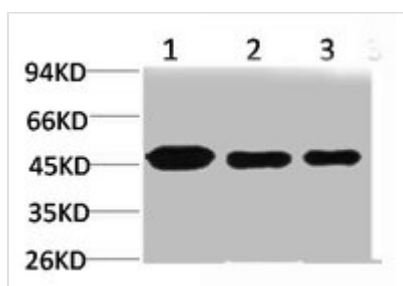
MAP2K1 Antibody

Product Code	CSB-PA080228
Storage	Upon receipt, store at -20°C or -80°C. Avoid repeated freeze.
Uniprot No.	Q02750
Immunogen	Recombinant Protein
Raised In	Rabbit
Species Reactivity	Human,Mouse,Rat
Tested Applications	WB, IHC; WB:1:1000-2000, IHC:1:100-200
Form	Liquid
Conjugate	Non-conjugated
Storage Buffer	Liquid in PBS containing 50% glycerol, 0.5% BSA and 0.02% sodium azide.
Isotype	IgG
Alias	Dual specificity mitogen-activated protein kinase kinase 1
Immunogen Species	Homo sapiens (Human)
Target Names	MAP2K1

Image



Immunohistochemical analysis of paraffin-embedded Human Colon Carcinoma using MEK-1 Polyclonal Antibody.



Western blot analysis of 1) HeLa, 2) 3T3, 3) PC12 using MEK-1 Polyclonal Antibody.

Usage

For Research Use Only. Not for use in diagnostic or therapeutic procedures.