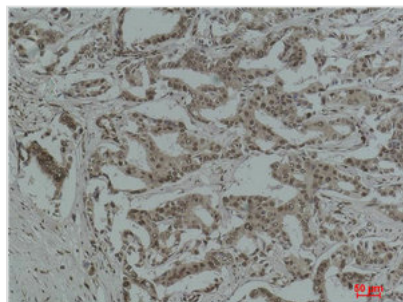




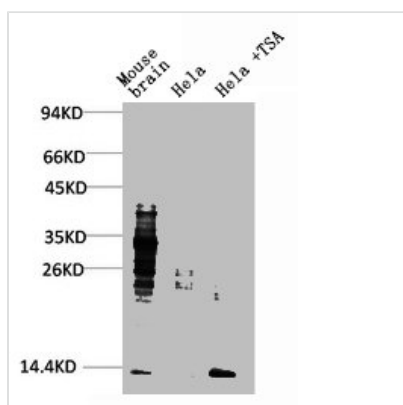
# Acetyl Lysine Monoclonal Antibody

<b>Product Code</b>	CSB-MA080244
<b>Storage</b>	Upon receipt, store at -20°C or -80°C. Avoid repeated freeze.
<b>Immunogen</b>	Purified Protein
<b>Raised In</b>	Mouse
<b>Species Reactivity</b>	All
<b>Tested Applications</b>	ELISA, WB, IHC; Recommended dilution: WB: 1:500-1:5000, IHC: 1:50-1:500
<b>Form</b>	Liquid
<b>Conjugate</b>	Non-conjugated
<b>Storage Buffer</b>	PBS, pH 7.4, containing 0.02% sodium azide as Preservative and 50% Glycerol.
<b>Isotype</b>	IgG
<b>Product Type</b>	Monoclonal Antibody
<b>Immunogen Species</b>	All

## Image



Immunohistochemical analysis of paraffin-embedded Human Breast Carcinoma using Acetyl Lysine Monoclonal Antibody.



Western blot analysis of 1) Mouse Brain Tissue, 2) HeLa, 3) HeLa+TSA Treated using Acetyl Lysine Monoclonal Antibody.