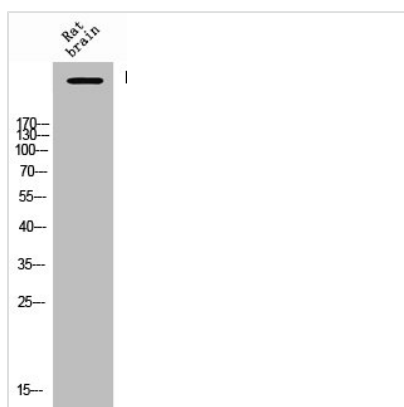




Phospho-ITPR1 (S1764) Antibody

Product Code	CSB-PA011280
Storage	Upon receipt, store at -20°C or -80°C. Avoid repeated freeze.
Uniprot No.	Q14643
Immunogen	Synthesized peptide derived from Human IP3R-I around the phosphorylation site of S1764.
Raised In	Rabbit
Species Reactivity	Human,Mouse,Rat
Tested Applications	WB, IHC, ELISA; IHC:1:100-1:300, ELISA:1:5000
Form	Liquid
Conjugate	Non-conjugated
Storage Buffer	Liquid in PBS containing 50% glycerol, 0.5% BSA and 0.02% sodium azide.
Purification Method	The antibody was affinity-purified from rabbit antiserum by affinity-chromatography using epitope-specific immunogen.
Isotype	IgG
Alias	ITPR1; INSP3R1; Inositol 1; 4,5-trisphosphate receptor type 1; IP3 receptor isoform 1; IP3R 1; InsP3R1; Type 1 inositol 1,4,5-trisphosphate receptor; Type 1 InsP3 receptor
Immunogen Species	Homo sapiens (Human)
Target Names	ITPR1

Image



Western Blot analysis of Rat-brain cells using Phospho-IP3R-I (S1764) Polyclonal Antibody

Usage For Research Use Only. Not for use in diagnostic or therapeutic procedures.