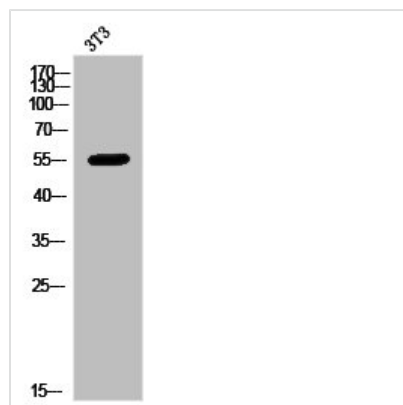




KCNJ3 Antibody

Product Code	CSB-PA010515
Storage	Upon receipt, store at -20°C or -80°C. Avoid repeated freeze.
Uniprot No.	P48549
Immunogen	Synthesized peptide derived from Human KIR3.1 around the non-phosphorylation site of S185.
Raised In	Rabbit
Species Reactivity	Human, Mouse, Rat
Tested Applications	WB, IF, ELISA; WB:1:500-1:2000, IF:1:200-1:1000, ELISA:1:20000
Form	Liquid
Conjugate	Non-conjugated
Storage Buffer	Liquid in PBS containing 50% glycerol, 0.5% BSA and 0.02% sodium azide.
Purification Method	The antibody was affinity-purified from rabbit antiserum by affinity-chromatography using epitope-specific immunogen.
Isotype	IgG
Alias	KCNJ3; GIRK1; G protein-activated inward rectifier potassium channel 1; GIRK-1; Inward rectifier K(+) channel Kir3.1; Potassium channel; inwardly rectifying subfamily J member 3
Immunogen Species	Homo sapiens (Human)
Target Names	KCNJ3

Image



Western Blot analysis of 3T3 cells using KIR3.1 Polyclonal Antibody

Usage For Research Use Only. Not for use in diagnostic or therapeutic procedures.