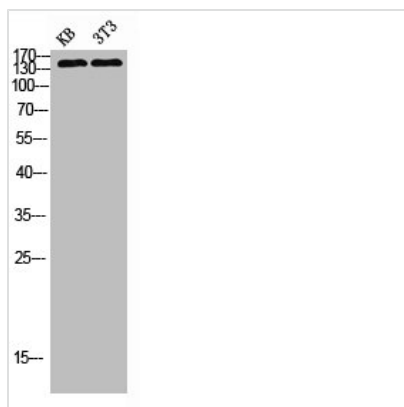




PLCG2 Antibody

Product Code	CSB-PA010540
Storage	Upon receipt, store at -20°C or -80°C. Avoid repeated freeze.
Uniprot No.	P16885
Immunogen	Synthesized peptide derived from Human PLC γ 2 around the non-phosphorylation site of Y1217.
Raised In	Rabbit
Species Reactivity	Human, Mouse, Rat
Tested Applications	WB, IHC, ELISA; WB:1:500-1:2000, IHC:1:100-1:300, ELISA:1:5000
Form	Liquid
Conjugate	Non-conjugated
Storage Buffer	Liquid in PBS containing 50% glycerol, 0.5% BSA and 0.02% sodium azide.
Purification Method	The antibody was affinity-purified from rabbit antiserum by affinity-chromatography using epitope-specific immunogen.
Isotype	IgG
Alias	PLCG2; 1-phosphatidylinositol 4; 5-bisphosphate phosphodiesterase gamma-2; Phosphoinositide phospholipase C-gamma-2; Phospholipase C-IV; PLC-IV; Phospholipase C-gamma-2; PLC-gamma-2
Immunogen Species	Homo sapiens (Human)
Target Names	PLCG2

Image



Western blot analysis of kb 3T3 lysis using PLC γ 2 antibody.

Usage

For Research Use Only. Not for use in diagnostic or therapeutic procedures.