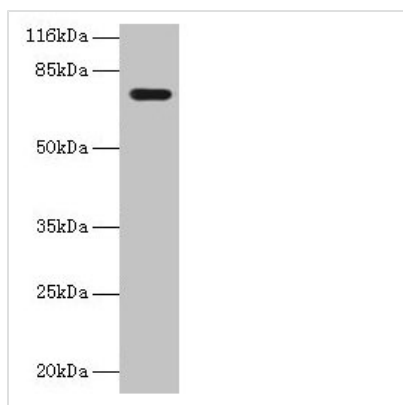




KBTBD2 Antibody

| | |
|----------------------------|---|
| Product Code | CSB-PA811624LA01HU |
| Storage | Upon receipt, store at -20°C or -80°C. Avoid repeated freeze. |
| Uniprot No. | Q8IY47 |
| Immunogen | Recombinant Human Kelch repeat and BTB domain-containing protein 2 protein (182-406AA) |
| Raised In | Rabbit |
| Species Reactivity | Human |
| Tested Applications | ELISA, WB; Recommended dilution: WB:1:500-1:2000 |
| Form | Liquid |
| Conjugate | Non-conjugated |
| Storage Buffer | Preservative: 0.03% Proclin 300 Constituents: 50% Glycerol, 0.01M PBS, PH 7.4 |
| Purification Method | >95%, Protein G purified |
| Isotype | IgG |
| Clonality | Polyclonal |
| Alias | Kelch repeat and BTB domain-containing protein 2 (BTB and kelch domain-containing protein 1), KBTBD2, BKLHD1 KIAA1489 |
| Immunogen Species | Homo sapiens (Human) |
| Research Area | Others |
| Target Names | KBTBD2 |

Image



Western blot

All lanes: KBTBD2 antibody at 2µg/ml + A549 whole cell lysate

Secondary

Goat polyclonal to rabbit IgG at 1/10000 dilution

Predicted band size: 72 kDa

Observed band size: 72 kDa

Usage

For Research Use Only. Not for use in diagnostic or therapeutic procedures.