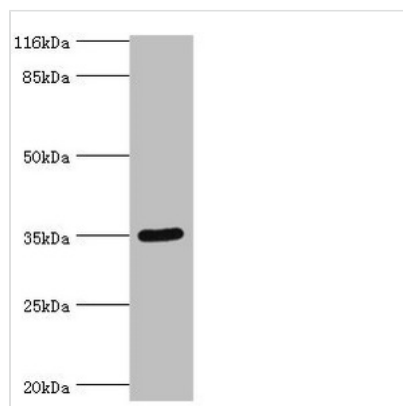




# SULT1B1 Antibody

<b>Product Code</b>	CSB-PA022937EA01HU
<b>Storage</b>	Upon receipt, store at -20°C or -80°C. Avoid repeated freeze.
<b>Uniprot No.</b>	O43704
<b>Immunogen</b>	Recombinant Human Sulfotransferase family cytosolic 1B member 1 protein (1-271AA)
<b>Raised In</b>	Rabbit
<b>Species Reactivity</b>	Human, Mouse
<b>Tested Applications</b>	ELISA, WB, IHC; Recommended dilution: WB:1:500-1:1000, IHC:1:20-1:200
<b>Form</b>	Liquid
<b>Conjugate</b>	Non-conjugated
<b>Storage Buffer</b>	Preservative: 0.03% Proclin 300 Constituents: 50% Glycerol, 0.01M PBS, PH 7.4
<b>Purification Method</b>	>95%, Protein G purified
<b>Isotype</b>	IgG
<b>Clonality</b>	Polyclonal
<b>Alias</b>	Sulfotransferase family cytosolic 1B member 1 (ST1B1) (Sulfotransferase 1B1) (EC 2.8.2.-) (Sulfotransferase 1B2) (ST1B2) (Thyroid hormone sulfotransferase), SULT1B1, ST1B2 SULT1B2
<b>Immunogen Species</b>	Homo sapiens (Human)
<b>Research Area</b>	Signal Transduction
<b>Target Names</b>	SULT1B1

## Image



### Western blot

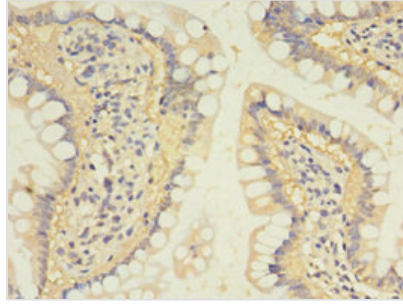
All lanes: SULT1B1 antibody at 24µg/ml +  
Mouse small intestine tissue

### Secondary

Goat polyclonal to rabbit IgG at 1/10000 dilution

Predicted band size: 35 kDa

Observed band size: 35 kDa



Immunohistochemistry of paraffin-embedded human small intestine tissue using CSB-PA022937EA01HU at dilution of 1:100

---

**Usage**

For Research Use Only. Not for use in diagnostic or therapeutic procedures.