



CYP2E1 Antibody

Product Code	CSB-PA006425EA01HU
Storage	Upon receipt, store at -20°C or -80°C. Avoid repeated freeze.
Uniprot No.	P05181
Immunogen	Recombinant Human Cytochrome P450 2E1 protein (49-288AA)
Raised In	Rabbit
Species Reactivity	Human, Mouse
Tested Applications	ELISA, WB, IHC; Recommended dilution: WB:1:500-1:2000, IHC:1:20-1:200
Form	Liquid
Conjugate	Non-conjugated
Storage Buffer	Preservative: 0.03% Proclin 300 Constituents: 50% Glycerol, 0.01M PBS, PH 7.4
Purification Method	>95%, Protein G purified
Isotype	IgG
Clonality	Polyclonal
Alias	Cytochrome P450 2E1 (EC 1.14.13.-) (4-nitrophenol 2-hydroxylase) (EC 1.14.13.n7) (CYP11E1) (Cytochrome P450-J), CYP2E1, CYP2E
Immunogen Species	Homo sapiens (Human)
Research Area	Cardiovascular
Target Names	CYP2E1

Image



Western blot

All lanes: CYP2E1 antibody at 12µg/ml

Lane 1: Jurkat whole cell lysate

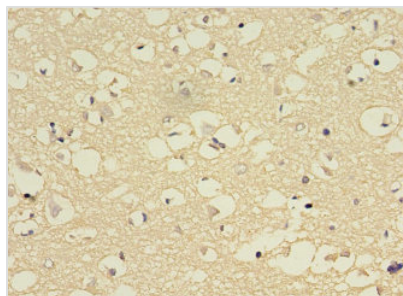
Lane 2: Mouse liver tissue

Secondary

Goat polyclonal to rabbit IgG at 1/10000 dilution

Predicted band size: 57 kDa

Observed band size: 57 kDa



Immunohistochemistry of paraffin-embedded human brain tissue using CSB-PA006425EA01HU at dilution of 1:100