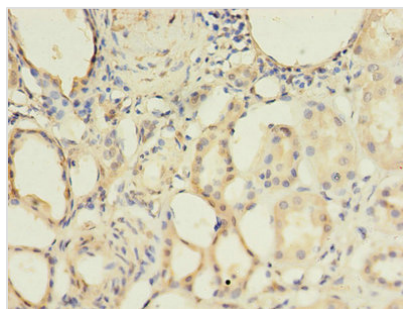




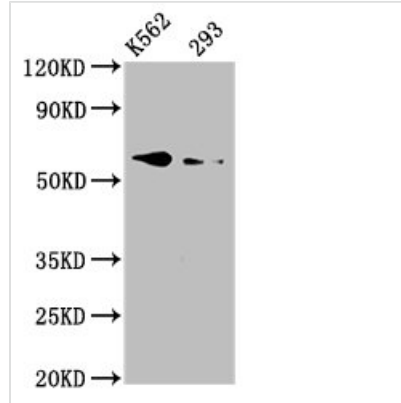
# BMPR1A Antibody

<b>Product Code</b>	CSB-PA002748LA01HU
<b>Storage</b>	Upon receipt, store at -20°C or -80°C. Avoid repeated freeze.
<b>Uniprot No.</b>	P36894
<b>Immunogen</b>	Recombinant Human Bone morphogenetic protein receptor type-1A protein (177-532AA)
<b>Raised In</b>	Rabbit
<b>Species Reactivity</b>	Human
<b>Tested Applications</b>	ELISA, WB, IHC, IF; Recommended dilution: WB:1:500-1:5000, IHC:1:100-1:1000, IF:1:200-1:500
<b>Form</b>	Liquid
<b>Conjugate</b>	Non-conjugated
<b>Storage Buffer</b>	Preservative: 0.03% Proclin 300 Constituents: 50% Glycerol, 0.01M PBS, PH 7.4
<b>Purification Method</b>	>95%, Protein G purified
<b>Isotype</b>	IgG
<b>Clonality</b>	Polyclonal
<b>Alias</b>	Bone morphogenetic protein receptor type-1A (BMP type-1A receptor) (BMPR-1A) (EC 2.7.11.30) (Activin receptor-like kinase 3) (ALK-3) (Serine/threonine-protein kinase receptor R5) (SKR5) (CD antigen CD292), BMPR1A, ACVRLK3 ALK3
<b>Immunogen Species</b>	Homo sapiens (Human)
<b>Research Area</b>	Signal Transduction
<b>Target Names</b>	BMPR1A

## Image



Immunohistochemistry of paraffin-embedded human kidney tissue using CSB-PA002748LA01HU at dilution of 1:100


**Western Blot**

Positive WB detected in: K562 whole cell lysate, 293 whole cell lysate

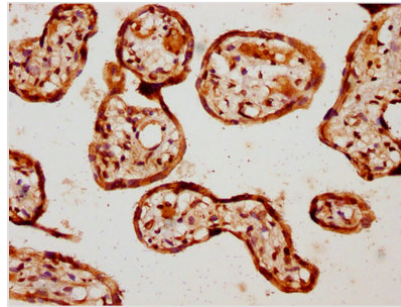
All lanes: BMPR1A antibody at 3.3 $\mu$ g/ml

Secondary

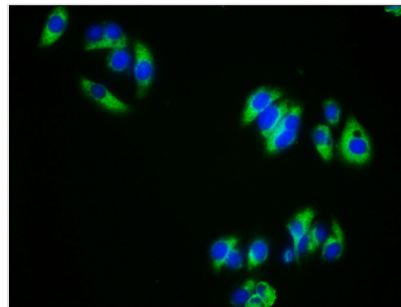
Goat polyclonal to rabbit IgG at 1/50000 dilution

Predicted band size: 61 kDa

Observed band size: 61 kDa



IHC image of CSB-PA002748LA01HU diluted at 1:1000 and staining in paraffin-embedded human placenta tissue performed on a Leica Bond<sup>TM</sup> system. After dewaxing and hydration, antigen retrieval was mediated by high pressure in a citrate buffer (pH 6.0). Section was blocked with 10% normal goat serum 30min at RT. Then primary antibody (1% BSA) was incubated at 4°C overnight. The primary is detected by a biotinylated secondary antibody and visualized using an HRP conjugated SP system.



Immunofluorescence staining of HepG2 cells with CSB-PA002748LA01HU at 1:333, counter-stained with DAPI. The cells were fixed in 4% formaldehyde, permeabilized using 0.2% Triton X-100 and blocked in 10% normal Goat Serum. The cells were then incubated with the antibody overnight at 4°C. The secondary antibody was Alexa Fluor 488-conjugated AffiniPure Goat Anti-Rabbit IgG(H+L).

**Usage**

For Research Use Only. Not for use in diagnostic or therapeutic procedures.