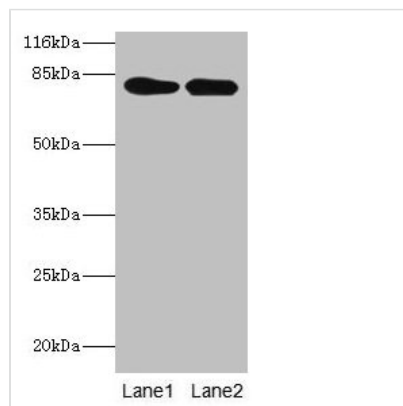




LHCGR Antibody

Product Code	CSB-PA012911LA01HU
Storage	Upon receipt, store at -20°C or -80°C. Avoid repeated freeze.
Uniprot No.	P22888
Immunogen	Recombinant Human Lutropin-choriogonadotropic hormone receptor protein (27-363AA)
Raised In	Rabbit
Species Reactivity	Human, Mouse
Tested Applications	ELISA, WB, IHC, IF; Recommended dilution: WB:1:500-1:2000, IHC:1:20-1:200, IF:1:50-1:200
Form	Liquid
Conjugate	Non-conjugated
Storage Buffer	Preservative: 0.03% Proclin 300 Constituents: 50% Glycerol, 0.01M PBS, PH 7.4
Purification Method	>95%, Protein G purified
Isotype	IgG
Clonality	Polyclonal
Alias	Lutropin-choriogonadotropic hormone receptor (LH/CG-R) (Luteinizing hormone receptor) (LHR) (LSH-R), LHCGR, LCGR LGR2 LHRHR
Immunogen Species	Homo sapiens (Human)
Research Area	Neuroscience
Target Names	LHCGR

Image



Western blot

All lanes: LHCGR antibody at 2µg/ml

Lane 1: Mouse brain tissue

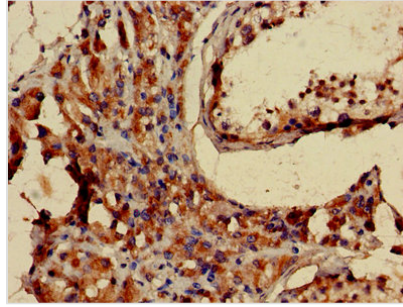
Lane 2: Mouse kidney tissue

Secondary

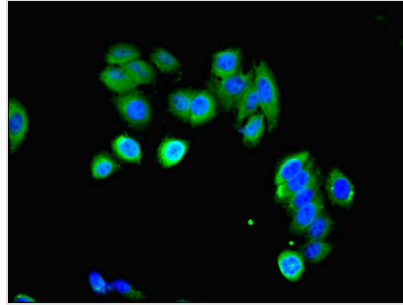
Goat polyclonal to rabbit IgG at 1/10000 dilution

Predicted band size: 79, 72 kDa

Observed band size: 79 kDa



Immunohistochemistry of paraffin-embedded human testis tissue using CSB-PA012911LA01HU at dilution of 1:100



Immunofluorescent analysis of HepG2 cells using CSB-PA012911LA01HU at dilution of 1:100 and Alexa Fluor 488-conjugated AffiniPure Goat Anti-Rabbit IgG(H+L)

Usage

For Research Use Only. Not for use in diagnostic or therapeutic procedures.