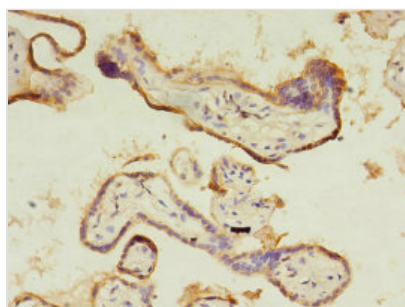




CTHRC1 Antibody

| | |
|----------------------------|--|
| Product Code | CSB-PA822189EA01HU |
| Storage | Upon receipt, store at -20°C or -80°C. Avoid repeated freeze. |
| Uniprot No. | Q96CG8 |
| Immunogen | Recombinant Human Collagen triple helix repeat-containing protein 1 protein (31-200AA) |
| Raised In | Rabbit |
| Species Reactivity | Human |
| Tested Applications | ELISA, IHC; Recommended dilution: IHC:1:20-1:200 |
| Form | Liquid |
| Conjugate | Non-conjugated |
| Storage Buffer | Preservative: 0.03% Proclin 300 Constituents: 50% Glycerol, 0.01M PBS, PH 7.4 |
| Purification Method | >95%, Protein G purified |
| Isotype | IgG |
| Clonality | Polyclonal |
| Alias | Collagen triple helix repeat-containing protein 1 (Protein NMTC1), CTHRC1 |
| Immunogen Species | Homo sapiens (Human) |
| Research Area | Signal Transduction |
| Target Names | CTHRC1 |

Image



Immunohistochemistry of paraffin-embedded human placenta tissue using CSB-PA822189EA01HU at dilution of 1:100