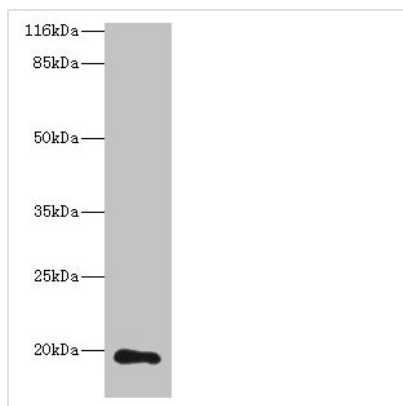




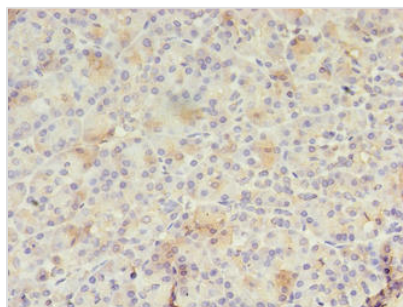
RAB30 Antibody

Product Code	CSB-PA613602LA01HU
Storage	Upon receipt, store at -20°C or -80°C. Avoid repeated freeze.
Uniprot No.	Q15771
Immunogen	Recombinant Human Ras-related protein Rab-30 protein (1-200AA)
Raised In	Rabbit
Species Reactivity	Human
Tested Applications	ELISA, WB, IHC; Recommended dilution: WB:1:500-1:5000, IHC:1:20-1:200
Form	Liquid
Conjugate	Non-conjugated
Storage Buffer	Preservative: 0.03% Proclin 300 Constituents: 50% Glycerol, 0.01M PBS, PH 7.4
Purification Method	Antigen Affinity Purified
Isotype	IgG
Clonality	Polyclonal
Alias	Ras-related protein Rab-30, RAB30
Immunogen Species	Homo sapiens (Human)
Research Area	Signal Transduction
Target Names	RAB30

Image



Western blot
All lanes: RAB30 antibody at 1µg/ml + Hela whole cell lysate
Secondary
Goat polyclonal to rabbit IgG at 1/10000 dilution
Predicted band size: 24, 19 kDa
Observed band size: 19 kDa



Immunohistochemistry of paraffin-embedded human pancreatic tissue using CSB-PA613602LA01HU at dilution of 1:100

