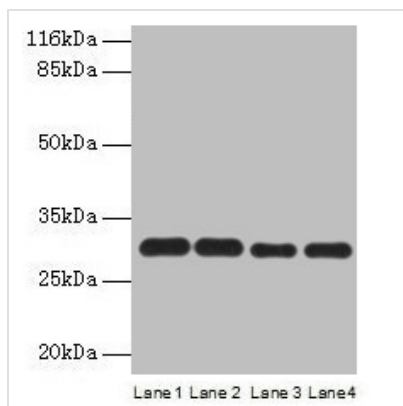




# PMM1 Antibody

<b>Product Code</b>	CSB-PA018237LA01HU
<b>Storage</b>	Upon receipt, store at -20°C or -80°C. Avoid repeated freeze.
<b>Uniprot No.</b>	Q92871
<b>Immunogen</b>	Recombinant Human Phosphomannomutase 1 protein (2-262AA)
<b>Raised In</b>	Rabbit
<b>Species Reactivity</b>	Human, Mouse
<b>Tested Applications</b>	ELISA, WB, IHC; Recommended dilution: WB:1:500-1:5000, IHC:1:20-1:200
<b>Form</b>	Liquid
<b>Conjugate</b>	Non-conjugated
<b>Storage Buffer</b>	Preservative: 0.03% Proclin 300 Constituents: 50% Glycerol, 0.01M PBS, PH 7.4
<b>Purification Method</b>	>95%, Protein G purified
<b>Isotype</b>	IgG
<b>Clonality</b>	Polyclonal
<b>Alias</b>	Phosphomannomutase 1 (PMM 1) (EC 5.4.2.8) (PMMH-22), PMM1, PMMH22
<b>Immunogen Species</b>	Homo sapiens (Human)
<b>Research Area</b>	Signal Transduction
<b>Target Names</b>	PMM1

## Image



### Western blot

All lanes: PMM1 antibody at 2µg/ml

Lane 1: HepG2 whole cell lysate

Lane 2: NIH/3T3 whole cell lysate

Lane 3: 293T whole cell lysate

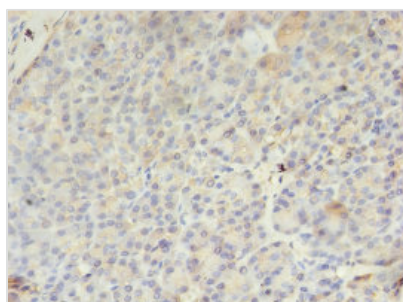
Lane 4: Mouse brain tissue

Secondary

Goat polyclonal to rabbit IgG at 1/10000 dilution

Predicted band size: 30 kDa

Observed band size: 30 kDa



Immunohistochemistry of paraffin-embedded

human pancreatic tissue using CSB-

PA018237LA01HU at dilution of 1:100



---

**Usage**

For Research Use Only. Not for use in diagnostic or therapeutic procedures.