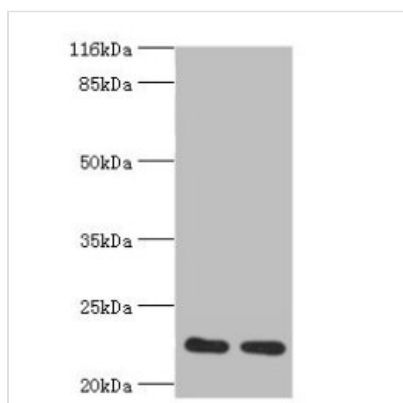




# RERG Antibody

<b>Product Code</b>	CSB-PA850254LA01HU
<b>Storage</b>	Upon receipt, store at -20°C or -80°C. Avoid repeated freeze.
<b>Uniprot No.</b>	Q96A58
<b>Immunogen</b>	Recombinant Human Ras-related and estrogen-regulated growth inhibitor protein (1-199AA)
<b>Raised In</b>	Rabbit
<b>Species Reactivity</b>	Human, Mouse, Rat
<b>Tested Applications</b>	ELISA, WB, IHC; Recommended dilution: WB:1:500-2000, IHC:1:20-1:200
<b>Form</b>	Liquid
<b>Conjugate</b>	Non-conjugated
<b>Storage Buffer</b>	Preservative: 0.03% Proclin 300 Constituents: 50% Glycerol, 0.01M PBS, PH 7.4
<b>Purification Method</b>	>95%, Protein G purified
<b>Isotype</b>	IgG
<b>Clonality</b>	Polyclonal
<b>Alias</b>	Ras-related and estrogen-regulated growth inhibitor, RERG
<b>Immunogen Species</b>	Homo sapiens (Human)
<b>Research Area</b>	Signal Transduction
<b>Target Names</b>	RERG

## Image



Western blot

All lanes: RERG antibody at 2µg/ml

Lane 1: Mouse thymus tissue

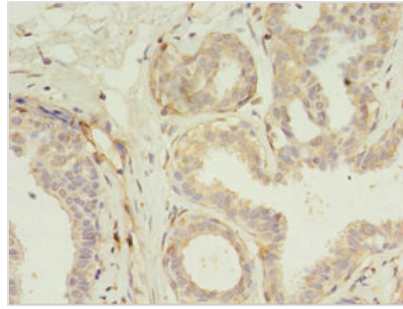
Lane 2: Rat lung tissue

Secondary

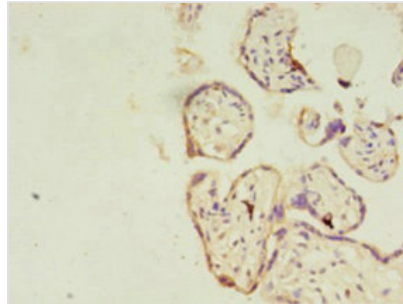
Goat polyclonal to rabbit at 1/10000 dilution

Predicted band size: 23, 21 kDa

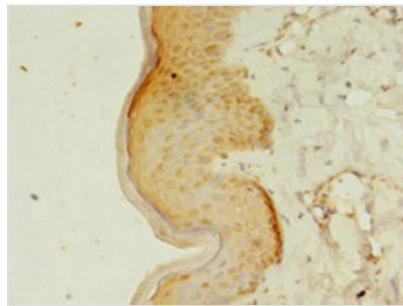
Observed band size: 23 kDa



Immunohistochemistry of paraffin-embedded human breast cancer using CSB-PA850254LA01HU at dilution of 1:100



Immunohistochemistry of paraffin-embedded human placenta tissue using CSB-PA850254LA01HU at dilution of 1:100



Immunohistochemistry of paraffin-embedded human skin tissue using CSB-PA850254LA01HU at dilution of 1:100

## Usage

For Research Use Only. Not for use in diagnostic or therapeutic procedures.