



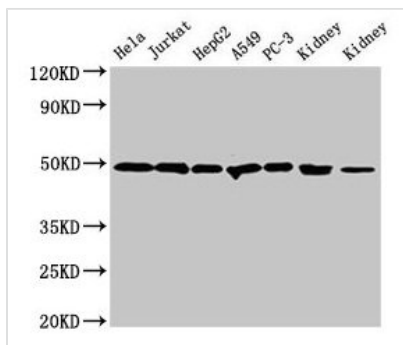
CALR Antibody

Product Code	CSB-PA07867A0Rb
Storage	Upon receipt, store at -20°C or -80°C. Avoid repeated freeze.
Uniprot No.	P27797
Immunogen	Recombinant Human Calreticulin protein (18-415AA)
Raised In	Rabbit
Species Reactivity	Human, Mouse, Rat
Tested Applications	ELISA, WB, IHC, IF; Recommended dilution: WB:1:500-1:5000, IHC:1:20-1:200, IF:1:50-1:200
Form	Liquid
Conjugate	Non-conjugated
Storage Buffer	Preservative: 0.03% Proclin 300 Constituents: 50% Glycerol, 0.01M PBS, PH 7.4
Purification Method	>95%, Protein G purified
Isotype	IgG
Clonality	Polyclonal
Alias	Calreticulin (CRP55) (Calregulin) (Endoplasmic reticulum resident protein 60) (ERp60) (HACBP) (grp60), CALR, CRTC
Immunogen Species	Homo sapiens (Human)
Research Area	Tags & Cell Markers
Target Names	CALR

Image



Immunohistochemistry of paraffin-embedded human placenta tissue using CSB-PA07867A0Rb at dilution of 1:100

**Western Blot**

Positive WB detected in: HeLa whole cell lysate, Jurkat whole cell lysate, HepG2 whole cell lysate, A549 whole cell lysate, PC-3 whole cell lysate, Rat kidney tissue, Mouse kidney tissue

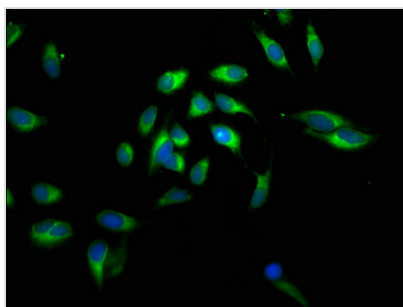
All lanes: CALR antibody at 2 μ g/ml

Secondary

Goat polyclonal to rabbit IgG at 1/50000 dilution

Predicted band size: 49 kDa

Observed band size: 49 kDa



Immunofluorescent analysis of HeLa cells using CSB-PA07867A0Rb at dilution of 1:100 and Alexa Fluor 488-conjugated AffiniPure Goat Anti-Rabbit IgG(H+L)

Usage

For Research Use Only. Not for use in diagnostic or therapeutic procedures.