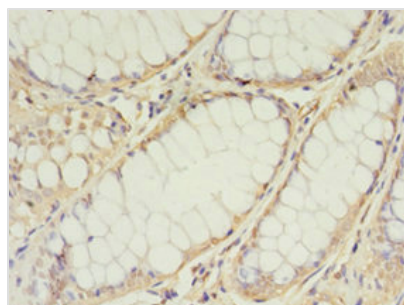




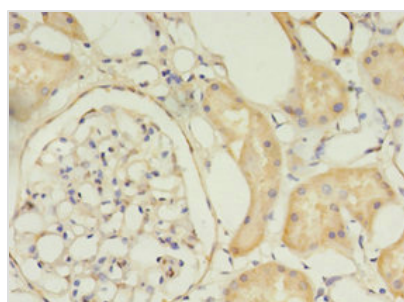
TIMM10 Antibody

Product Code	CSB-PA023548LA01HU
Storage	Upon receipt, store at -20°C or -80°C. Avoid repeated freeze.
Uniprot No.	P62072
Immunogen	Recombinant Human Mitochondrial import inner membrane translocase subunit Tim10 protein (1-90AA)
Raised In	Rabbit
Species Reactivity	Human
Tested Applications	ELISA, IHC; Recommended dilution: IHC:1:20-1:200
Form	Liquid
Conjugate	Non-conjugated
Storage Buffer	Preservative: 0.03% Proclin 300 Constituents: 50% Glycerol, 0.01M PBS, PH 7.4
Purification Method	>95%, Protein G purified
Isotype	IgG
Clonality	Polyclonal
Alias	Mitochondrial import inner membrane translocase subunit Tim10, TIMM10, TIM10
Immunogen Species	Homo sapiens (Human)
Research Area	Signal Transduction
Target Names	TIMM10

Image



Immunohistochemistry of paraffin-embedded human colon cancer using CSB-PA023548LA01HU at dilution of 1:100



Immunohistochemistry of paraffin-embedded human kidney tissue using CSB-PA023548LA01HU at dilution of 1:100

**Usage**

For Research Use Only. Not for use in diagnostic or therapeutic procedures.