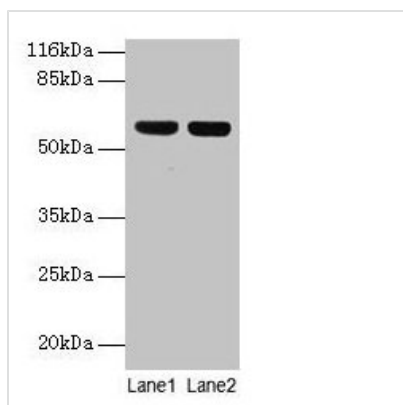




ATP5F1A Antibody

Product Code	CSB-PA002344LA01HU
Storage	Upon receipt, store at -20°C or -80°C. Avoid repeated freeze.
Uniprot No.	P25705
Immunogen	Recombinant Human ATP synthase subunit alpha, mitochondrial protein (44-553AA)
Raised In	Rabbit
Species Reactivity	Human
Tested Applications	ELISA, WB; Recommended dilution: WB:1:500-1:5000
Form	Liquid
Conjugate	Non-conjugated
Storage Buffer	Preservative: 0.03% Proclin 300 Constituents: 50% Glycerol, 0.01M PBS, PH 7.4
Purification Method	>95%, Protein G purified
Isotype	IgG
Clonality	Polyclonal
Alias	ATP synthase subunit alpha, mitochondrial (ATP synthase F1 subunit alpha ATP5A1), ATP5F1A, ATP5A, ATP5A1, ATP5AL2, ATPM
Immunogen Species	Homo sapiens (Human)
Research Area	Tags & Cell Markers
Target Names	ATP5F1A

Image



Western blot

All lanes: ATP5F1A antibody at 2µg/ml

Lane 1: HeLa whole cell lysate

Lane 2: COLO205 whole cell lysate

Secondary

Goat polyclonal to rabbit IgG at 1/10000 dilution

Predicted band size: 60, 55, 58 kDa

Observed band size: 60 kDa

Usage

For Research Use Only. Not for use in diagnostic or therapeutic procedures.