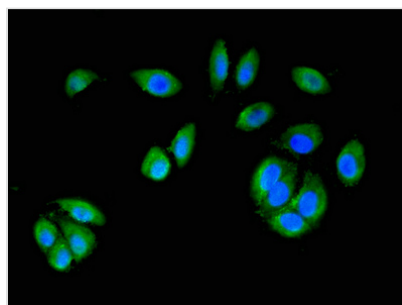




MAP2K6 Antibody

| | |
|----------------------------|---|
| Product Code | CSB-PA013415LA01HU |
| Storage | Upon receipt, store at -20°C or -80°C. Avoid repeated freeze. |
| Uniprot No. | P52564 |
| Immunogen | Recombinant Human Dual specificity mitogen-activated protein kinase kinase 6 protein (1-334AA) |
| Raised In | Rabbit |
| Species Reactivity | Human |
| Tested Applications | ELISA, IF; Recommended dilution: IF:1:200-1:500 |
| Form | Liquid |
| Conjugate | Non-conjugated |
| Storage Buffer | Preservative: 0.03% Proclin 300 Constituents: 50% Glycerol, 0.01M PBS, PH 7.4 |
| Purification Method | >95%, Protein G purified |
| Isotype | IgG |
| Clonality | Polyclonal |
| Alias | Dual specificity mitogen-activated protein kinase kinase 6 (MAP kinase kinase 6) (MAPKK 6) (EC 2.7.12.2) (MAPK/ERK kinase 6) (MEK 6) (Stress-activated protein kinase kinase 3) (SAPK kinase 3) (SAPKK-3) (SAPKK3), MAP2K6, MEK6 MKK6 PRKMK6 SKK3 |
| Immunogen Species | Homo sapiens (Human) |
| Research Area | Cell Biology |
| Target Names | MAP2K6 |

Image



Immunofluorescence staining of A549 cells with CSB-PA013415LA01HU at 1:200, counter-stained with DAPI. The cells were fixed in 4% formaldehyde, permeabilized using 0.2% Triton X-100 and blocked in 10% normal Goat Serum. The cells were then incubated with the antibody overnight at 4°C. The secondary antibody was Alexa Fluor 488-conjugated AffiniPure Goat Anti-Rabbit IgG(H+L).

Usage

For Research Use Only. Not for use in diagnostic or therapeutic procedures.