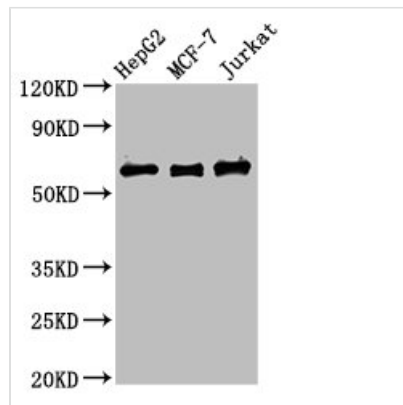




PRUNE1 Antibody

Product Code	CSB-PA771430LA01HU
Storage	Upon receipt, store at -20°C or -80°C. Avoid repeated freeze.
Uniprot No.	Q86TP1
Immunogen	Recombinant Human Exopolyphosphatase PRUNE1 protein (1-168AA)
Raised In	Rabbit
Species Reactivity	Human
Tested Applications	ELISA, WB, IHC, IF, IP; Recommended dilution: WB:1:1000-1:5000, IHC:1:200-1:500, IF:1:50-1:200, IP:1:200-1:2000
Form	Liquid
Conjugate	Non-conjugated
Storage Buffer	Preservative: 0.03% Proclin 300 Constituents: 50% Glycerol, 0.01M PBS, PH 7.4
Purification Method	>95%, Protein G purified
Isotype	IgG
Clonality	Polyclonal
Alias	Exopolyphosphatase PRUNE1 (EC 3.6.1.1) (Drosophila-related expressed sequence 17) (DRES-17) (DRES17) (HTcD37) (Protein prune homolog 1) (hPrune), PRUNE1, PRUNE
Immunogen Species	Homo sapiens (Human)
Research Area	Tags & Cell Markers
Target Names	PRUNE1

Image



Western Blot

Positive WB detected in: HepG2 whole cell lysate, MCF-7 whole cell lysate, Jurkat whole cell lysate

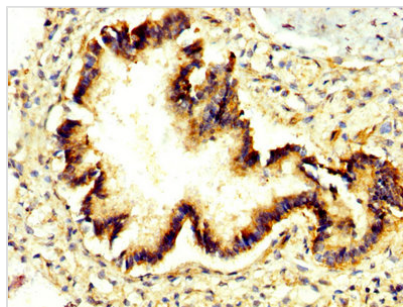
All lanes: PRUNE1 antibody at 4µg/ml

Secondary

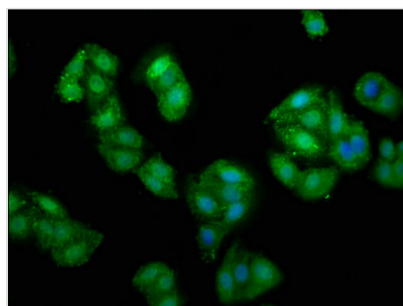
Goat polyclonal to rabbit IgG at 1/50000 dilution

Predicted band size: 51, 43, 31, 27, 25, 19 kDa

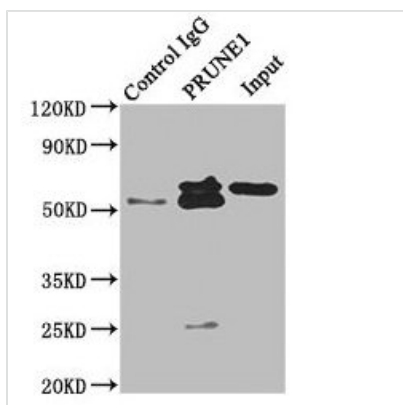
Observed band size: 60 kDa



IHC image of CSB-PA771430LA01HU diluted at 1:300 and staining in paraffin-embedded human lung tissue performed on a Leica Bond™ system. After dewaxing and hydration, antigen retrieval was mediated by high pressure in a citrate buffer (pH 6.0). Section was blocked with 10% normal goat serum 30min at RT. Then primary antibody (1% BSA) was incubated at 4°C overnight. The primary is detected by a biotinylated secondary antibody and visualized using an HRP conjugated SP system.



Immunofluorescence staining of HepG2 cells with CSB-PA771430LA01HU at 1:135, counter-stained with DAPI. The cells were fixed in 4% formaldehyde, permeabilized using 0.2% Triton X-100 and blocked in 10% normal Goat Serum. The cells were then incubated with the antibody overnight at 4°C. The secondary antibody was Alexa Fluor 488-conjugated AffiniPure Goat Anti-Rabbit IgG(H+L).



Immunoprecipitating PRUNE1 in HepG2 whole cell lysate

Lane 1: Rabbit control IgG instead of CSB-PA771430LA01HU in HepG2 whole cell lysate. For western blotting, a HRP-conjugated Protein G antibody was used as the secondary antibody (1/2000)

Lane 2: CSB-PA771430LA01HU (8μg) + HepG2 whole cell lysate (500μg)

Lane 3: HepG2 whole cell lysate (10μg)