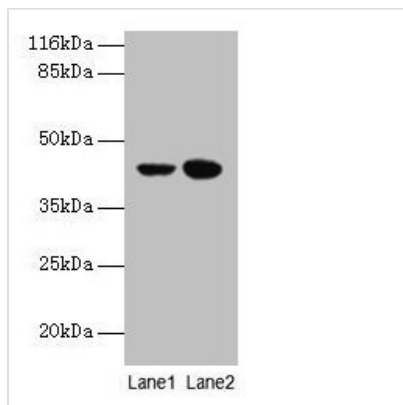




CCR6 Antibody

| | |
|----------------------------|---|
| Product Code | CSB-PA004845EA01HU |
| Storage | Upon receipt, store at -20°C or -80°C. Avoid repeated freeze. |
| Uniprot No. | P51684 |
| Immunogen | Recombinant Human C-C chemokine receptor type 6 protein (322-374AA) |
| Raised In | Rabbit |
| Species Reactivity | Human |
| Tested Applications | ELISA, WB; Recommended dilution: WB:1:500-1:2000 |
| Form | Liquid |
| Conjugate | Non-conjugated |
| Storage Buffer | Preservative: 0.03% Proclin 300 Constituents: 50% Glycerol, 0.01M PBS, PH 7.4 |
| Purification Method | >95%, Protein G purified |
| Isotype | IgG |
| Clonality | Polyclonal |
| Alias | C-C chemokine receptor type 6 (C-C CKR-6) (CC-CKR-6) (CCR-6) (Chemokine receptor-like 3) (CKR-L3) (DRY6) (G-protein coupled receptor 29) (GPR-CY4) (GPCRY4) (LARC receptor) (CD antigen CD196), CCR6, CKRL3 CMKBR6 GPR29 STRL22 |
| Immunogen Species | Homo sapiens (Human) |
| Research Area | Immunology |
| Target Names | CCR6 |

Image



Western blot

All lanes: CCR6 antibody at 10µg/ml

Lane 1: MCF-7 whole cell lysate

Lane 2: Hela whole cell lysate

Secondary

Goat polyclonal to rabbit IgG at 1/10000 dilution

Predicted band size: 43 kDa

Observed band size: 43 kDa

Usage

For Research Use Only. Not for use in diagnostic or therapeutic procedures.