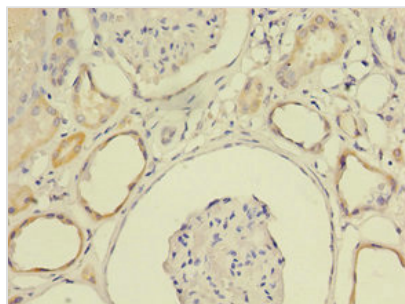




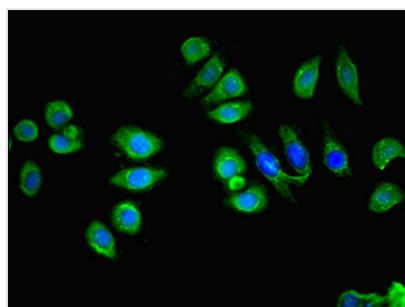
LY6E Antibody

Product Code	CSB-PA619076LA01HU
Storage	Upon receipt, store at -20°C or -80°C. Avoid repeated freeze.
Uniprot No.	Q16553
Immunogen	Recombinant Human Lymphocyte antigen 6E protein (21-101AA)
Raised In	Rabbit
Species Reactivity	Human
Tested Applications	ELISA, IHC, IF; Recommended dilution: IHC:1:20-1:200, IF:1:50-1:200
Form	Liquid
Conjugate	Non-conjugated
Storage Buffer	Preservative: 0.03% Proclin 300 Constituents: 50% Glycerol, 0.01M PBS, PH 7.4
Purification Method	>95%, Protein G purified
Isotype	IgG
Clonality	Polyclonal
Alias	Lymphocyte antigen 6E (Ly-6E) (Retinoic acid-induced gene E protein) (RIG-E) (Stem cell antigen 2) (SCA-2) (Thymic shared antigen 1) (TSA-1), LY6E, 9804 RIGE SCA2 TSA1
Immunogen Species	Homo sapiens (Human)
Research Area	Cell Biology
Target Names	LY6E

Image



Immunohistochemistry of paraffin-embedded human kidney tissue using CSB-PA619076LA01HU at dilution of 1:100



Immunofluorescent analysis of A549 cells using CSB-PA619076LA01HU at dilution of 1:100 and Alexa Fluor 488-conjugated AffiniPure Goat Anti-Rabbit IgG(H+L)



Usage

For Research Use Only. Not for use in diagnostic or therapeutic procedures.