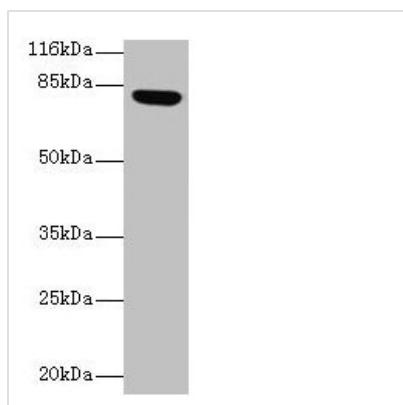




Lhcgr Antibody

Product Code	CSB-PA012911LA01RA
Storage	Upon receipt, store at -20°C or -80°C. Avoid repeated freeze.
Uniprot No.	P16235
Immunogen	Recombinant Rat Lutropin-choriogonadotropic hormone receptor protein (27-362AA)
Raised In	Rabbit
Species Reactivity	Rat
Tested Applications	ELISA, WB; Recommended dilution: WB:1:1000-1:5000
Form	Liquid
Conjugate	Non-conjugated
Storage Buffer	Preservative: 0.03% Proclin 300 Constituents: 50% Glycerol, 0.01M PBS, PH 7.4
Purification Method	>95%, Protein G purified
Isotype	IgG
Clonality	Polyclonal
Alias	Lutropin-choriogonadotropic hormone receptor (LH/CG-R) (Luteinizing hormone receptor) (LSH-R), Lhcgr
Immunogen Species	Rattus norvegicus (Rat)
Research Area	Neuroscience
Target Names	Lhcgr

Image



Western blot

All lanes: Lhcgr antibody at 2µg/ml + Rat gonadal tissue

Secondary

Goat polyclonal to rabbit IgG at 1/10000 dilution

Predicted band size: 79, 35, 38, 73, 28, 33, 21, 72, 31, 34, 41 kDa

Observed band size: 79 kDa

Usage

For Research Use Only. Not for use in diagnostic or therapeutic procedures.