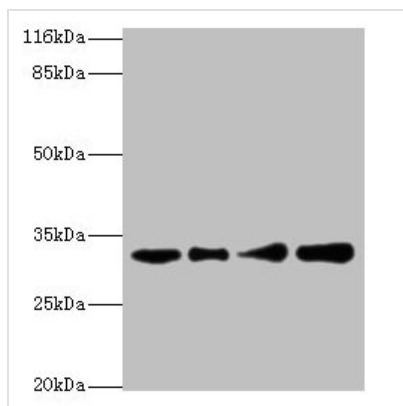




RSU1 Antibody

Product Code	CSB-PA020558LA01HU
Storage	Upon receipt, store at -20°C or -80°C. Avoid repeated freeze.
Uniprot No.	Q15404
Immunogen	Recombinant Human Ras suppressor protein 1 protein (117-277AA)
Raised In	Rabbit
Species Reactivity	Human
Tested Applications	ELISA, WB; Recommended dilution: WB:1:500-1:5000
Form	Liquid
Conjugate	Non-conjugated
Storage Buffer	Preservative: 0.03% Proclin 300 Constituents: 50% Glycerol, 0.01M PBS, PH 7.4
Purification Method	>95%, Protein G purified
Isotype	IgG
Clonality	Polyclonal
Alias	Ras suppressor protein 1 (RSP-1) (Rsu-1), RSU1, RSP1
Immunogen Species	Homo sapiens (Human)
Research Area	Signal Transduction
Target Names	RSU1

Image



Western blot
 All lanes: RSU1 antibody at 2µg/ml
 Lane 1: Human placenta tissue
 Lane 2: Caco-2 whole cell lysate
 Lane 3: Jurkat whole cell lysate
 Lane 4: HepG2 whole cell lysate
 Secondary
 Goat polyclonal to rabbit IgG at 1/10000 dilution
 Predicted band size: 32, 26 kDa
 Observed band size: 32 kDa

Usage

For Research Use Only. Not for use in diagnostic or therapeutic procedures.