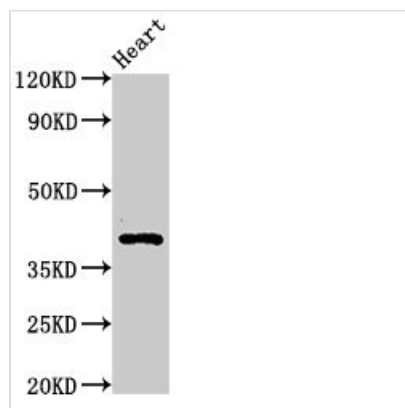




MECR Antibody

| | |
|----------------------------|---|
| Product Code | CSB-PA887132LA01HU |
| Storage | Upon receipt, store at -20°C or -80°C. Avoid repeated freeze. |
| Uniprot No. | Q9BV79 |
| Immunogen | Recombinant Human Trans-2-enoyl-CoA reductase, mitochondrial protein (211-373AA) |
| Raised In | Rabbit |
| Species Reactivity | Human, Rat |
| Tested Applications | ELISA, WB, IHC; Recommended dilution: WB:1:500-1:5000, IHC:1:20-1:200 |
| Form | Liquid |
| Conjugate | Non-conjugated |
| Storage Buffer | Preservative: 0.03% Proclin 300 Constituents: 50% Glycerol, 0.01M PBS, PH 7.4 |
| Purification Method | >95%, Protein G purified |
| Isotype | IgG |
| Clonality | Polyclonal |
| Alias | Enoyl-[acyl-carrier-protein] reductase, mitochondrial (EC 1.3.1.104) (2-enoyl thioester reductase) (Nuclear receptor-binding factor 1) (HsNr1h1) (NR1H1), MECR, NBRF1 |
| Immunogen Species | Homo sapiens (Human) |
| Research Area | Signal Transduction |
| Target Names | MECR |

Image



Western Blot

Positive WB detected in: Rat heart tissue

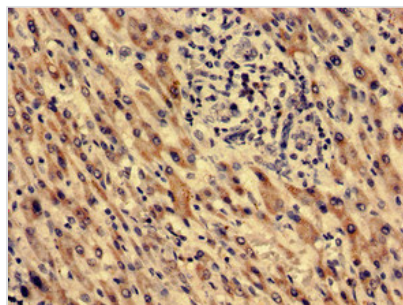
All lanes: MECR antibody at 3.3µg/ml

Secondary

Goat polyclonal to rabbit IgG at 1/50000 dilution

Predicted band size: 41, 33 kDa

Observed band size: 41 kDa



Immunohistochemistry analysis of human liver cancer using CSB-PA887132LA01HU at dilution of 1:100