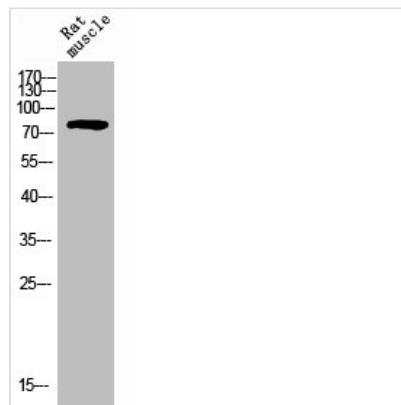




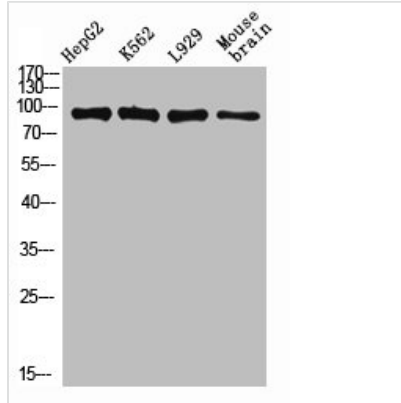
# PECAM1 Antibody

<b>Product Code</b>	CSB-PA851852
<b>Storage</b>	Upon receipt, store at -20°C or -80°C. Avoid repeated freeze.
<b>Uniprot No.</b>	P16284
<b>Immunogen</b>	Synthesized peptide derived from Human CD31 around the non-phosphorylation site of Y713.
<b>Raised In</b>	Rabbit
<b>Species Reactivity</b>	Human,Mouse,Rat
<b>Tested Applications</b>	WB, IHC, IF, ELISA; WB:1:500-1:2000, IHC:1:100-1:300, IF:1:200-1:1000, ELISA:1:20000
<b>Form</b>	Liquid
<b>Conjugate</b>	Non-conjugated
<b>Storage Buffer</b>	Liquid in PBS containing 50% glycerol, 0.5% BSA and 0.02% sodium azide.
<b>Purification Method</b>	The antibody was affinity-purified from rabbit antiserum by affinity-chromatography using epitope-specific immunogen.
<b>Isotype</b>	IgG
<b>Alias</b>	Adhesion molecule antibody; CD31 antibody; CD31 antigen antibody; CD31 EndoCAM antibody; EndoCAM antibody; FLJ34100 antibody; FLJ58394 antibody; GPIIA antibody; GPIIA' antibody; PECA1 antibody; PECA1_HUMAN antibody; Pecam 1 antibody; PECAM 1 CD31 EndoCAM antibody; PECAM antibody; PECAM-1 antibody; Pecam1 antibody; Platelet and endothelial cell adhesion molecule 1 antibody; Platelet endothelial cell adhesion molecule antibody; Platelet/endothelial cell adhesion molecule 1 antibody
<b>Immunogen Species</b>	Homo sapiens (Human)
<b>Target Names</b>	PECAM1

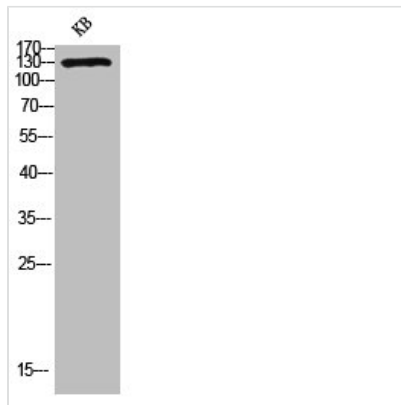
## Image



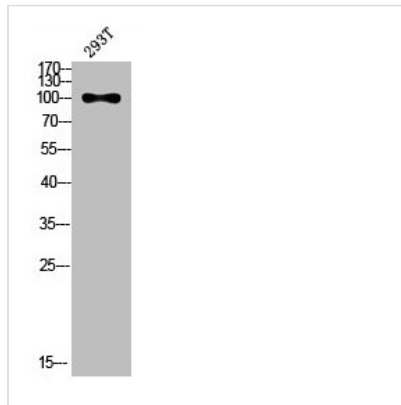
Western Blot analysis of rat-muscle cells using CD31 Polyclonal Antibody.



Western Blot analysis of various cells using CD31 Polyclonal Antibody diluted at 1:1000



Western blot analysis of KB lysis using CD31 antibody.



Western blot analysis of 293T lysis using CD31 antibody.

## Usage

For Research Use Only. Not for use in diagnostic or therapeutic procedures.