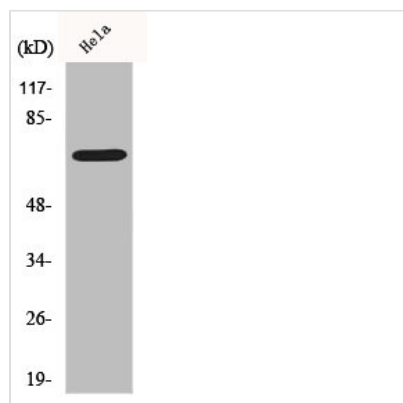




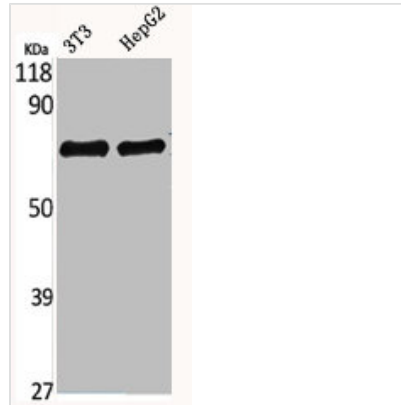
XRCC6 Antibody

Product Code	CSB-PA891611
Storage	Upon receipt, store at -20°C or -80°C. Avoid repeated freeze.
Uniprot No.	P12956
Immunogen	Synthesized peptide derived from Human Ku-70 around the non-phosphorylation site of S5.
Raised In	Rabbit
Species Reactivity	Human, Mouse
Tested Applications	WB, IHC, ELISA; WB:1:500-1:2000, IHC:1:100-1:300, ELISA:1:5000
Form	Liquid
Conjugate	Non-conjugated
Storage Buffer	Liquid in PBS containing 50% glycerol, 0.5% BSA and 0.02% sodium azide.
Purification Method	The antibody was affinity-purified from rabbit antiserum by affinity-chromatography using epitope-specific immunogen.
Isotype	IgG
Alias	XRCC6; G22P1; X-ray repair cross-complementing protein 6; 5'-deoxyribose-5-phosphate lyase Ku70; 5'-dRP lyase Ku70; 70 kDa subunit of Ku antigen; ATP-dependent DNA helicase 2 subunit 1; ATP-dependent DNA helicase II 70 kDa subunit; CTC box-
Immunogen Species	Homo sapiens (Human)
Target Names	XRCC6

Image



Western Blot analysis of COLO205 cells using Ku-70 Polyclonal Antibody



Western Blot analysis of NIH-3T3 HepG2 cells using Ku-70 Polyclonal Antibody

Usage

For Research Use Only. Not for use in diagnostic or therapeutic procedures.