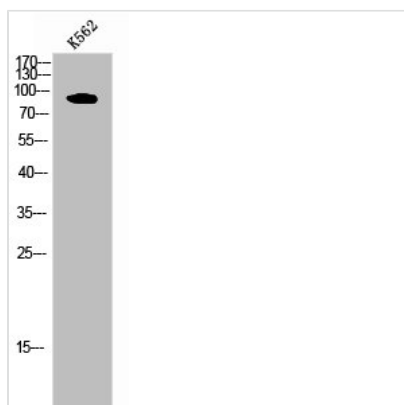




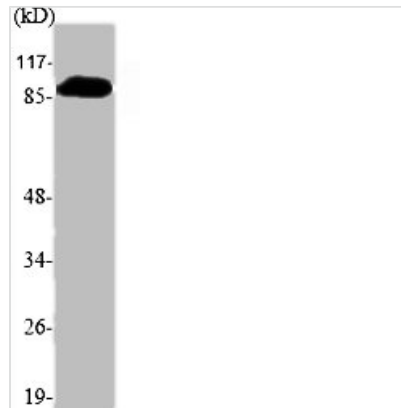
PDE4B/PDE4C/PDE4D Antibody

Product Code	CSB-PA289045
Storage	Upon receipt, store at -20°C or -80°C. Avoid repeated freeze.
Uniprot No.	Q07343/Q08493/Q08499
Immunogen	Synthesized peptide derived from Human PDE4B/C/D around the non-phosphorylation site of S133/119/190.
Raised In	Rabbit
Species Reactivity	Human, Mouse, Rat
Tested Applications	WB, IHC, ELISA; WB:1:500-1:2000, IHC:1:100-1:300, ELISA:1:10000
Form	Liquid
Conjugate	Non-conjugated
Storage Buffer	Liquid in PBS containing 50% glycerol, 0.5% BSA and 0.02% sodium azide.
Purification Method	The antibody was affinity-purified from rabbit antiserum by affinity-chromatography using epitope-specific immunogen.
Isotype	IgG
Alias	PDE4B; DPDE4; cAMP-specific 3'; 5'-cyclic phosphodiesterase 4B; DPDE4; PDE32; PDE4C; DPDE1; cAMP-specific 3',5'-cyclic phosphodiesterase 4C; DPDE1; PDE21; PDE4D; DPDE3; cAMP-specific 3',5'-cyclic phosphodiesterase 4D; DPDE3; PDE43
Immunogen Species	Homo sapiens (Human)
Target Names	PDE4B/PDE4C/PDE4D

Image



Western Blot analysis of K562 cells using PDE4B/C/D Polyclonal Antibody



Western Blot analysis of various cells using PDE4B/C/D Polyclonal Antibody

Usage

For Research Use Only. Not for use in diagnostic or therapeutic procedures.