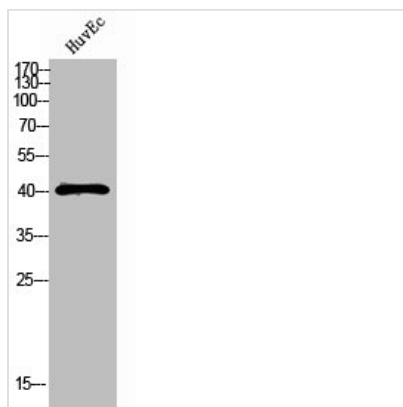




RCL1 Antibody

| | |
|----------------------------|---|
| Product Code | CSB-PA546927 |
| Storage | Upon receipt, store at -20°C or -80°C. Avoid repeated freeze. |
| Uniprot No. | Q9Y2P8 |
| Immunogen | Synthesized peptide derived from the C-terminal region of Human RCL1. |
| Raised In | Rabbit |
| Species Reactivity | Human,Mouse,Rat |
| Tested Applications | WB, ELISA; WB:1:500-1:2000, ELISA:1:40000 |
| Form | Liquid |
| Conjugate | Non-conjugated |
| Storage Buffer | Liquid in PBS containing 50% glycerol, 0.5% BSA and 0.02% sodium azide. |
| Purification Method | The antibody was affinity-purified from rabbit antiserum by affinity-chromatography using epitope-specific immunogen. |
| Isotype | IgG |
| Alias | RCL1; RNAC; RPC2; RPCL1; RTC2; HSPC338; RNA 3'-terminal phosphate cyclase-like protein |
| Immunogen Species | Homo sapiens (Human) |
| Target Names | RCL1 |

Image



Western Blot analysis of HUVEC cells using RCL1 Polyclonal Antibody