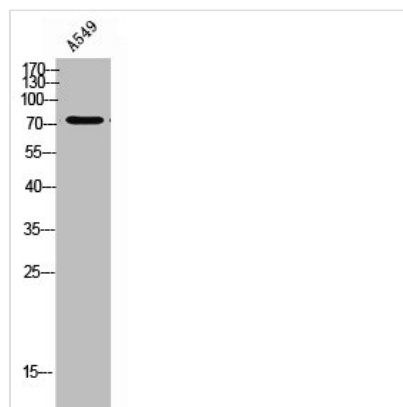




PDE10A Antibody

Product Code	CSB-PA282556
Storage	Upon receipt, store at -20°C or -80°C. Avoid repeated freeze.
Uniprot No.	Q9Y233
Immunogen	Synthesized peptide derived from the N-terminal region of Human PDE10A.
Raised In	Rabbit
Species Reactivity	Human,Rat
Tested Applications	WB, ELISA; WB:1:500-1:2000, ELISA:1:5000
Form	Liquid
Conjugate	Non-conjugated
Storage Buffer	Liquid in PBS containing 50% glycerol, 0.5% BSA and 0.02% sodium azide.
Purification Method	The antibody was affinity-purified from rabbit antiserum by affinity-chromatography using epitope-specific immunogen.
Isotype	IgG
Alias	PDE10A; cAMP and cAMP-inhibited cGMP 3'; 5'-cyclic phosphodiesterase 10A
Immunogen Species	Homo sapiens (Human)
Target Names	PDE10A

Image



Western Blot analysis of A549 cells using PDE10A Polyclonal Antibody

Usage

For Research Use Only. Not for use in diagnostic or therapeutic procedures.