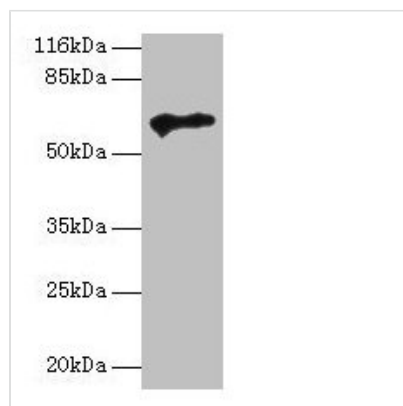




# TPTE Antibody

<b>Product Code</b>	CSB-PA024136LA01HU
<b>Storage</b>	Upon receipt, store at -20°C or -80°C. Avoid repeated freeze.
<b>Uniprot No.</b>	P56180
<b>Immunogen</b>	Recombinant Human Putative tyrosine-protein phosphatase TPTE protein (175-380AA)
<b>Raised In</b>	Rabbit
<b>Species Reactivity</b>	Human
<b>Tested Applications</b>	ELISA, WB, IF; Recommended dilution: WB:1:1000-1:5000, IF:1:50-1:200
<b>Form</b>	Liquid
<b>Conjugate</b>	Non-conjugated
<b>Storage Buffer</b>	Preservative: 0.03% Proclin 300 Constituents: 50% Glycerol, 0.01M PBS, PH 7.4
<b>Purification Method</b>	>95%, Protein G purified
<b>Isotype</b>	IgG
<b>Clonality</b>	Polyclonal
<b>Alias</b>	Putative tyrosine-protein phosphatase TPTE (EC 3.1.3.48) (Cancer/testis antigen 44) (CT44) (Transmembrane phosphatase with tensin homology) (Tumor antigen BJ-HCC-5), TPTE
<b>Immunogen Species</b>	Homo sapiens (Human)
<b>Research Area</b>	Cell Biology
<b>Target Names</b>	TPTE

## Image



### Western blot

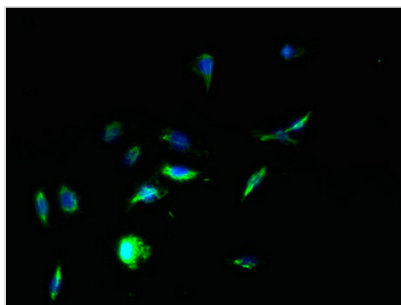
All lanes: TPTE antibody at 2µg/ml + HepG2 whole cell lysate

### Secondary

Goat polyclonal to rabbit IgG at 1/10000 dilution

Predicted band size: 65, 63, 61, 50 kDa

Observed band size: 65 kDa



Immunofluorescent analysis of HepG2 cells using CSB-PA024136LA01HU at dilution of 1:100 and Alexa Fluor 488-conjugated AffiniPure Goat Anti-Rabbit IgG(H+L)