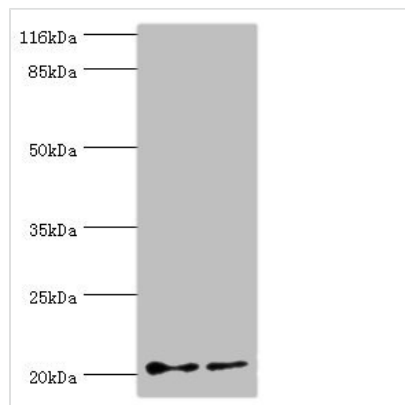




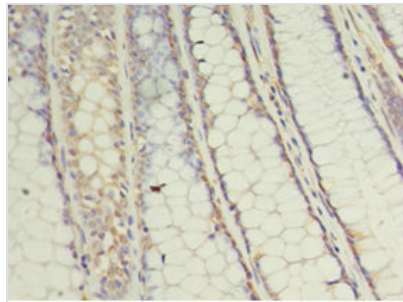
UBE2C Antibody

Product Code	CSB-PA025440LA01HU
Storage	Upon receipt, store at -20°C or -80°C. Avoid repeated freeze.
Uniprot No.	O00762
Immunogen	Recombinant Human Ubiquitin-conjugating enzyme E2 C protein (2-179AA)
Raised In	Rabbit
Species Reactivity	Human
Tested Applications	ELISA, WB, IHC; Recommended dilution: WB:1:500-1:5000, IHC:1:20-1:200
Form	Liquid
Conjugate	Non-conjugated
Storage Buffer	Preservative: 0.03% Proclin 300 Constituents: 50% Glycerol, 0.01M PBS, PH 7.4
Purification Method	>95%, Protein G purified
Isotype	IgG
Clonality	Polyclonal
Alias	Ubiquitin-conjugating enzyme E2 C (EC 2.3.2.23) ((E3-independent) E2 ubiquitin-conjugating enzyme C) (EC 2.3.2.24) (E2 ubiquitin-conjugating enzyme C) (UbcH10) (Ubiquitin carrier protein C) (Ubiquitin-protein ligase C), UBE2C, UBCH10
Immunogen Species	Homo sapiens (Human)
Research Area	Epigenetics and Nuclear Signaling
Target Names	UBE2C

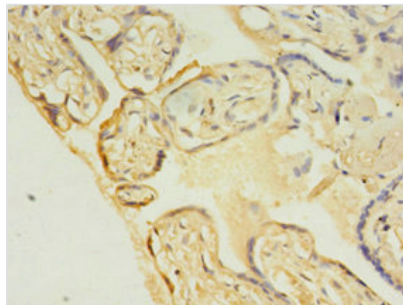
Image



Western blot
All lanes: UBE2C antibody at 2µg/ml
Lane 1: Hela whole cell lysate
Lane 2: U87 whole cell lysate
Secondary
Goat polyclonal to rabbit IgG at 1/10000 dilution
Predicted band size: 20, 16, 17, 18 kDa
Observed band size: 20 kDa



Immunohistochemistry of paraffin-embedded human colon cancer using CSB-PA025440LA01HU at dilution of 1:100



Immunohistochemistry of paraffin-embedded human placenta tissue using CSB-PA025440LA01HU at dilution of 1:100