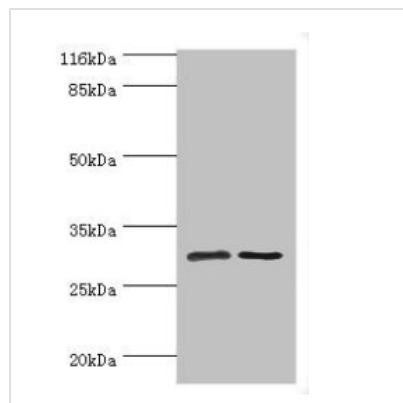




# SRPRB Antibody

|                            |  |
|----------------------------|--|
| <b>Product Code</b>        | CSB-PA896911LA01HU   |
| <b>Storage</b>             | Upon receipt, store at -20°C or -80°C. Avoid repeated freeze.                          |
| <b>Uniprot No.</b>         | Q9Y5M8   |
| <b>Immunogen</b>           | Recombinant Human Signal recognition particle receptor subunit beta protein (58-271AA) |
| <b>Raised In</b>           | Rabbit   |
| <b>Species Reactivity</b>  | Human  |
| <b>Tested Applications</b> | ELISA, WB, IF; Recommended dilution: WB:1:1000-1:5000, IF:1:50-1:200                   |
| <b>Form</b>                | Liquid   |
| <b>Conjugate</b>           | Non-conjugated   |
| <b>Storage Buffer</b>      | Preservative: 0.03% Proclin 300<br>Constituents: 50% Glycerol, 0.01M PBS, PH 7.4       |
| <b>Purification Method</b> | >95%, Protein G purified   |
| <b>Isotype</b>             | IgG  |
| <b>Clonality</b>           | Polyclonal   |
| <b>Alias</b>               | Signal recognition particle receptor subunit beta (SR-beta) (Protein APMCF1), SRPRB    |
| <b>Immunogen Species</b>   | Homo sapiens (Human)   |
| <b>Research Area</b>       | Signal Transduction  |
| <b>Target Names</b>        | SRPRB  |

## Image



### Western blot

All lanes: SRPRB antibody at 2µg/ml

Lane 1: HepG2 whole cell lysate

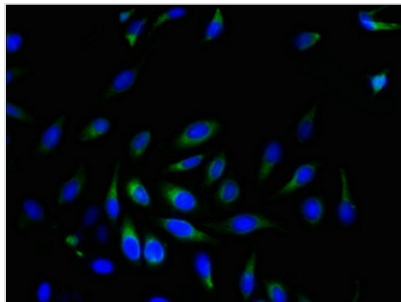
Lane 2: Hela whole cell lysate

Secondary

Goat polyclonal to rabbit IgG at 1/10000 dilution

Predicted band size: 30 kDa

Observed band size: 30 kDa



Immunofluorescent analysis of HeLa cells using CSB-PA896911LA01HU at dilution of 1:100 and Alexa Fluor 488-conjugated AffiniPure Goat Anti-Rabbit IgG(H+L)

---

**Usage**

For Research Use Only. Not for use in diagnostic or therapeutic procedures.