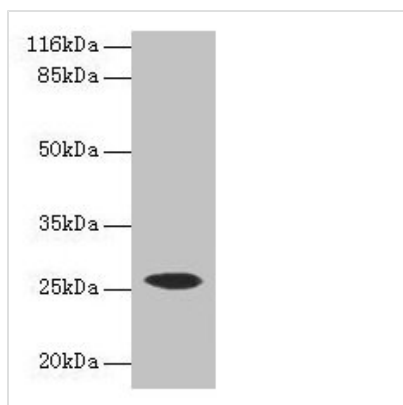




CSHL1 Antibody

Product Code	CSB-PA006055LA01HU
Storage	Upon receipt, store at -20°C or -80°C. Avoid repeated freeze.
Uniprot No.	Q14406
Immunogen	Recombinant Human Chorionic somatomammotropin hormone-like 1 protein (1-128AA)
Raised In	Rabbit
Species Reactivity	Human
Tested Applications	ELISA, WB, IHC; Recommended dilution: WB:1:500-1:5000, IHC:1:20-1:200
Form	Liquid
Conjugate	Non-conjugated
Storage Buffer	Preservative: 0.03% Proclin 300 Constituents: 50% Glycerol, 0.01M PBS, PH 7.4
Purification Method	>95%, Protein G purified
Isotype	IgG
Clonality	Polyclonal
Alias	Chorionic somatomammotropin hormone-like 1 (Chorionic somatomammotropin-like) (Lactogen-like), CSHL1, CSHP1 CSL
Immunogen Species	Homo sapiens (Human)
Research Area	Signal Transduction
Target Names	CSHL1

Image



Western blot

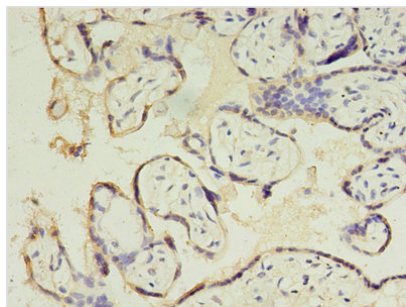
All lanes: CSHL1 antibody at 2µg/ml + Human placenta tissue

Secondary

Goat polyclonal to rabbit IgG at 1/10000 dilution

Predicted band size: 26, 23, 16, 15 kDa

Observed band size: 26 kDa



Immunohistochemistry of paraffin-embedded human placenta tissue using CSB-PA006055LA01HU at dilution of 1:100

Usage

For Research Use Only. Not for use in diagnostic or therapeutic procedures.