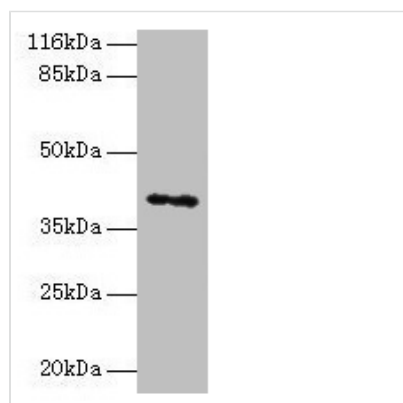




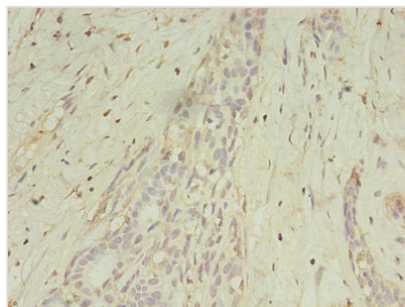
MAGEA10 Antibody

Product Code	CSB-PA013324LA01HU
Storage	Upon receipt, store at -20°C or -80°C. Avoid repeated freeze.
Uniprot No.	P43363
Immunogen	Recombinant Human Melanoma-associated antigen 10 protein (2-225AA)
Raised In	Rabbit
Species Reactivity	Human
Tested Applications	ELISA, WB, IHC; Recommended dilution: WB:1:500-1:5000, IHC:1:20-1:200
Form	Liquid
Conjugate	Non-conjugated
Storage Buffer	Preservative: 0.03% Proclin 300 Constituents: 50% Glycerol, 0.01M PBS, PH 7.4
Purification Method	>95%, Protein G purified
Isotype	IgG
Clonality	Polyclonal
Alias	Melanoma-associated antigen 10 (Cancer/testis antigen 1.10) (CT1.10) (MAGE-10 antigen), MAGEA10, MAGE10
Immunogen Species	Homo sapiens (Human)
Research Area	Cancer
Target Names	MAGEA10

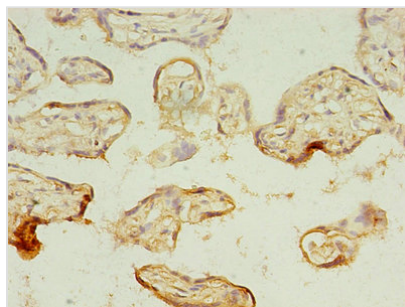
Image



Western blot
 All lanes: MAGEA10 antibody at 2µg/ml + HL60 whole cell lysate
 Secondary
 Goat polyclonal to rabbit IgG at 1/10000 dilution
 Predicted band size: 41 kDa
 Observed band size: 41 kDa



Immunohistochemistry of paraffin-embedded human breast cancer using CSB-PA013324LA01HU at dilution of 1:100



Immunohistochemistry of paraffin-embedded human placenta tissue using CSB-PA013324LA01HU at dilution of 1:100

Usage

For Research Use Only. Not for use in diagnostic or therapeutic procedures.