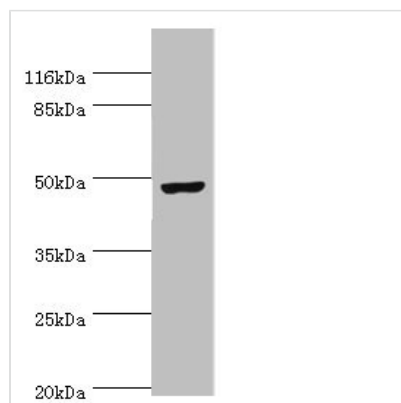




CKMT2 Antibody

Product Code	CSB-PA005462ESR2HU
Storage	Upon receipt, store at -20°C or -80°C. Avoid repeated freeze.
Uniprot No.	P17540
Immunogen	Recombinant Human Creatine kinase S-type, mitochondrial protein (40-230AA)
Raised In	Rabbit
Species Reactivity	Human
Tested Applications	ELISA, WB, IHC; Recommended dilution: WB:1:500-1:5000, IHC:1:20-1:200
Form	Liquid
Conjugate	Non-conjugated
Storage Buffer	PBS with 0.02% sodium azide, 50% glycerol, pH7.3.
Purification Method	Antigen Affinity Purified
Isotype	IgG
Clonality	Polyclonal
Alias	Creatine kinase S-type, mitochondrial (EC 2.7.3.2) (Basic-type mitochondrial creatine kinase) (Mib-CK) (Sarcomeric mitochondrial creatine kinase) (S-MtCK), CKMT2
Immunogen Species	Homo sapiens (Human)
Research Area	Tags & Cell Markers
Target Names	CKMT2

Image



Western blot

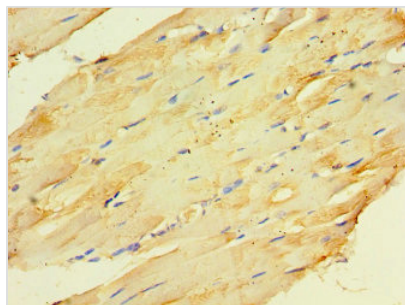
All lanes: CKMT2 antibody at 6µg/ml + HeLa whole cell lysate

Secondary

Goat polyclonal to rabbit IgG at 1/10000 dilution

Predicted band size: 48 kDa

Observed band size: 48 kDa



Immunohistochemistry of paraffin-embedded human skeletal muscle tissue using CSB-PA005462ESR2HU at dilution of 1:100

Usage

For Research Use Only. Not for use in diagnostic or therapeutic procedures.