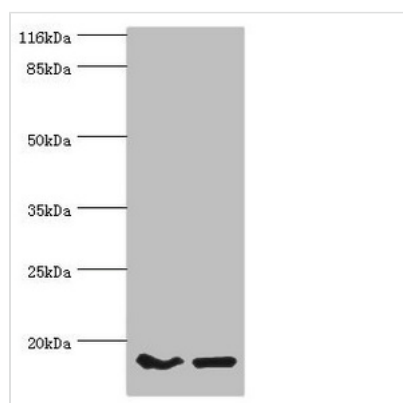




# POP7 Antibody

|                            |   |
|----------------------------|---|
| <b>Product Code</b>        | CSB-PA018375DSR2HU  |
| <b>Storage</b>             | Upon receipt, store at -20°C or -80°C. Avoid repeated freeze.   |
| <b>Uniprot No.</b>         | O75817  |
| <b>Immunogen</b>           | Recombinant Human Ribonuclease P protein subunit p20 protein (1-140AA)  |
| <b>Raised In</b>           | Rabbit  |
| <b>Species Reactivity</b>  | Human   |
| <b>Tested Applications</b> | ELISA, WB, IHC; Recommended dilution: WB:1:500-1:5000, IHC:1:20-1:200   |
| <b>Form</b>                | Liquid  |
| <b>Conjugate</b>           | Non-conjugated  |
| <b>Storage Buffer</b>      | PBS with 0.02% sodium azide, 50% glycerol, pH7.3.   |
| <b>Purification Method</b> | Antigen Affinity Purified   |
| <b>Isotype</b>             | IgG   |
| <b>Clonality</b>           | Polyclonal  |
| <b>Alias</b>               | Ribonuclease P protein subunit p20 (RNaseP protein p20) (EC 3.1.26.5) (Ribonucleases P/MRP protein subunit POP7 homolog) (hPOP7), POP7, RPP20 |
| <b>Immunogen Species</b>   | Homo sapiens (Human)  |
| <b>Research Area</b>       | Others  |
| <b>Target Names</b>        | POP7  |

## Image



Western blot

All lanes: POP7 antibody at 10µg/ml

Lane 1: HeLa whole cell lysate

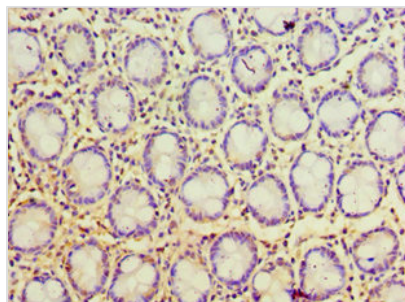
Lane 2: HepG2 whole cell lysate

Secondary

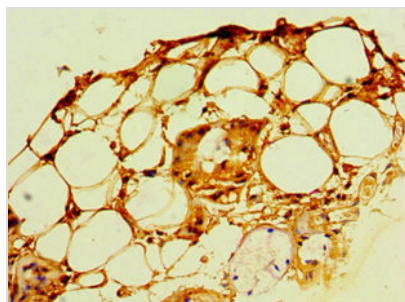
Goat polyclonal to rabbit IgG at 1/10000 dilution

Predicted band size: 16 kDa

Observed band size: 16 kDa



Immunohistochemistry of paraffin-embedded human colon tissue using CSB-PA018375DSR2HU at dilution of 1:100



Immunohistochemistry of paraffin-embedded human trachea tissue using CSB-PA018375DSR2HU at dilution of 1:100

## Usage

For Research Use Only. Not for use in diagnostic or therapeutic procedures.