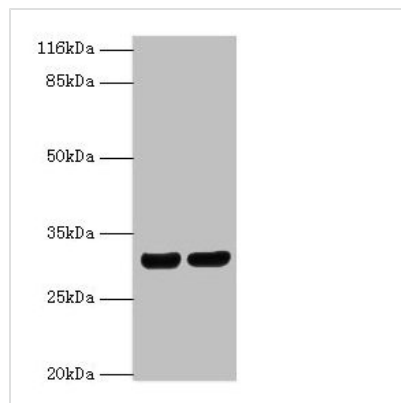




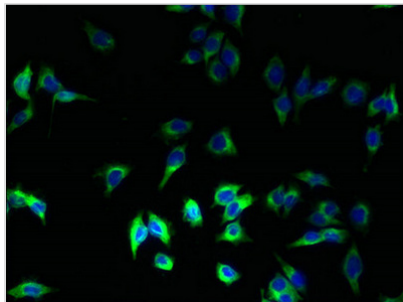
HLA-DRB1 Antibody

Product Code	CSB-PA19179A0Rb
Storage	Upon receipt, store at -20°C or -80°C. Avoid repeated freeze.
Uniprot No.	Q95IE3
Immunogen	Recombinant Human HLA class II histocompatibility antigen, DRB1-12 beta chain protein (30-266AA)
Raised In	Rabbit
Species Reactivity	Human
Tested Applications	ELISA, WB, IF; Recommended dilution: WB:1:1000-1:5000, IF:1:50-1:200
Form	Liquid
Conjugate	Non-conjugated
Storage Buffer	Preservative: 0.03% Proclin 300 Constituents: 50% Glycerol, 0.01M PBS, PH 7.4
Purification Method	>95%, Protein G purified
Isotype	IgG
Clonality	Polyclonal
Alias	HLA class II histocompatibility antigen, DRB1-12 beta chain (MHC class II antigen DRB1*12) (DR-12) (DR12), HLA-DRB1
Immunogen Species	Homo sapiens (Human)
Research Area	Others
Target Names	HLA-DRB1

Image



Western blot
 All lanes: HLA-DRB1 antibody at 2µg/ml
 Lane 1: A375 whole cell lysate
 Lane 2: Raji whole cell lysate
 Secondary
 Goat polyclonal to rabbit IgG at 1/10000 dilution
 Predicted band size: 30 kDa
 Observed band size: 30 kDa



Immunofluorescent analysis of A375 cells using CSB-PA19179A0Rb at dilution of 1:100 and Alexa Fluor 488-conjugated AffiniPure Goat Anti-Rabbit IgG(H+L)

Usage

For Research Use Only. Not for use in diagnostic or therapeutic procedures.