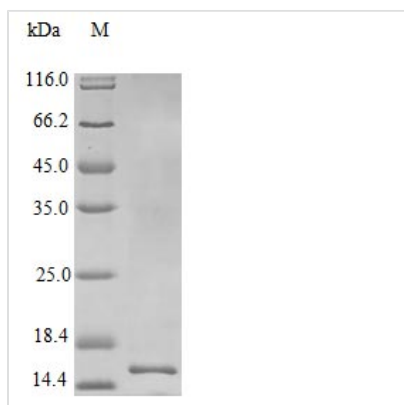




Recombinant Human Interleukin-22 protein (IL22) (Active)

| | |
|----------------------------|---|
| Product Code | CSB-AP001891HU |
| Abbreviation | Recombinant Human IL22 protein (Active) |
| Uniprot No. | Q9GZX6 |
| Form | Lyophilized powder |
| Storage Buffer | Lyophilized from a 0.2 µm filtered PBS, pH 5.0 |
| Product Type | Interleukin |
| Immunogen Species | Homo sapiens (Human) |
| Biological Activity | Fully biologically active when compared to standard. The ED50 as determined by inducing IL-10 secretion of human COLO 205 cells is less than 0.3 ng/ml, corresponding to a specific activity of >3.3x10 ⁶ IU/mg. |
| Purity | >97% as determined by SDS-PAGE. |
| Sequence | M+APISSHCRL DKSNFQQPYI TNRTFMLAKE ASLADNNTDV RLIGEKLFHG VSMSERCYLM KQVLNFTLEE VLFPSQDRFQ PYMQEVVPFL ARLSNRLSTC HIEGDDLHIQ RNVQKLKDTV KKLGESGEIK AIGELDLLFM SLRNACI |
| Research Area | Immunology |
| Source | E.Coli |
| Target Names | IL22 |
| Expression Region | 34-179aa |
| Notes | Repeated freezing and thawing is not recommended. Store working aliquots at 4°C for up to one week. |
| Tag Info | Tag-Free |
| Mol. Weight | 16.9kDa |
| Protein Length | Full Length of Mature Protein |
| PubMed ID | 10954742; 11197690; 10875937; 12975309; 15489334; 15340161; 11856845; 15983417; 18599299 |

Image


Endotoxin

Less than 1.0 EU/μg as determined by LAL method.

Reconstitution

We recommend that this vial be briefly centrifuged prior to opening to bring the contents to the bottom. Please reconstitute protein in deionized sterile water to a concentration of 0.1-1.0 mg/mL. We recommend to add 5-50% of glycerol (final concentration) and aliquot for long-term storage at -20°C/-80°C. Our default final concentration of glycerol is 50%. Customers could use it as reference.

Shelf Life

The shelf life is related to many factors, storage state, buffer ingredients, storage temperature and the stability of the protein itself. Generally, the shelf life of liquid form is 6 months at -20°C/-80°C. The shelf life of lyophilized form is 12 months at -20°C/-80°C.